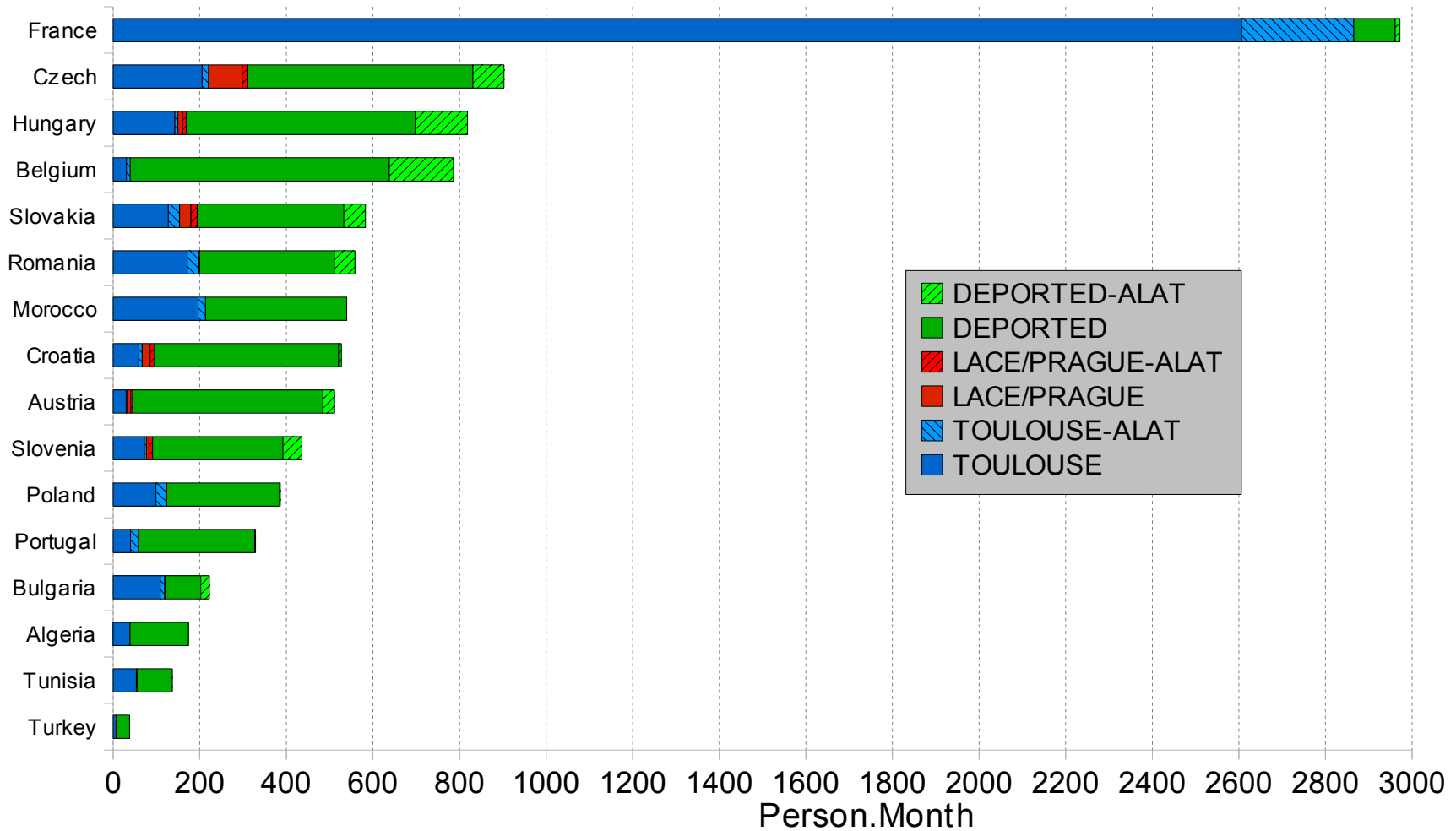


# Total participation in the ALADIN project

Breakdown of the person.months by member



Updated on July 1, 2010

# ALADIN Participation

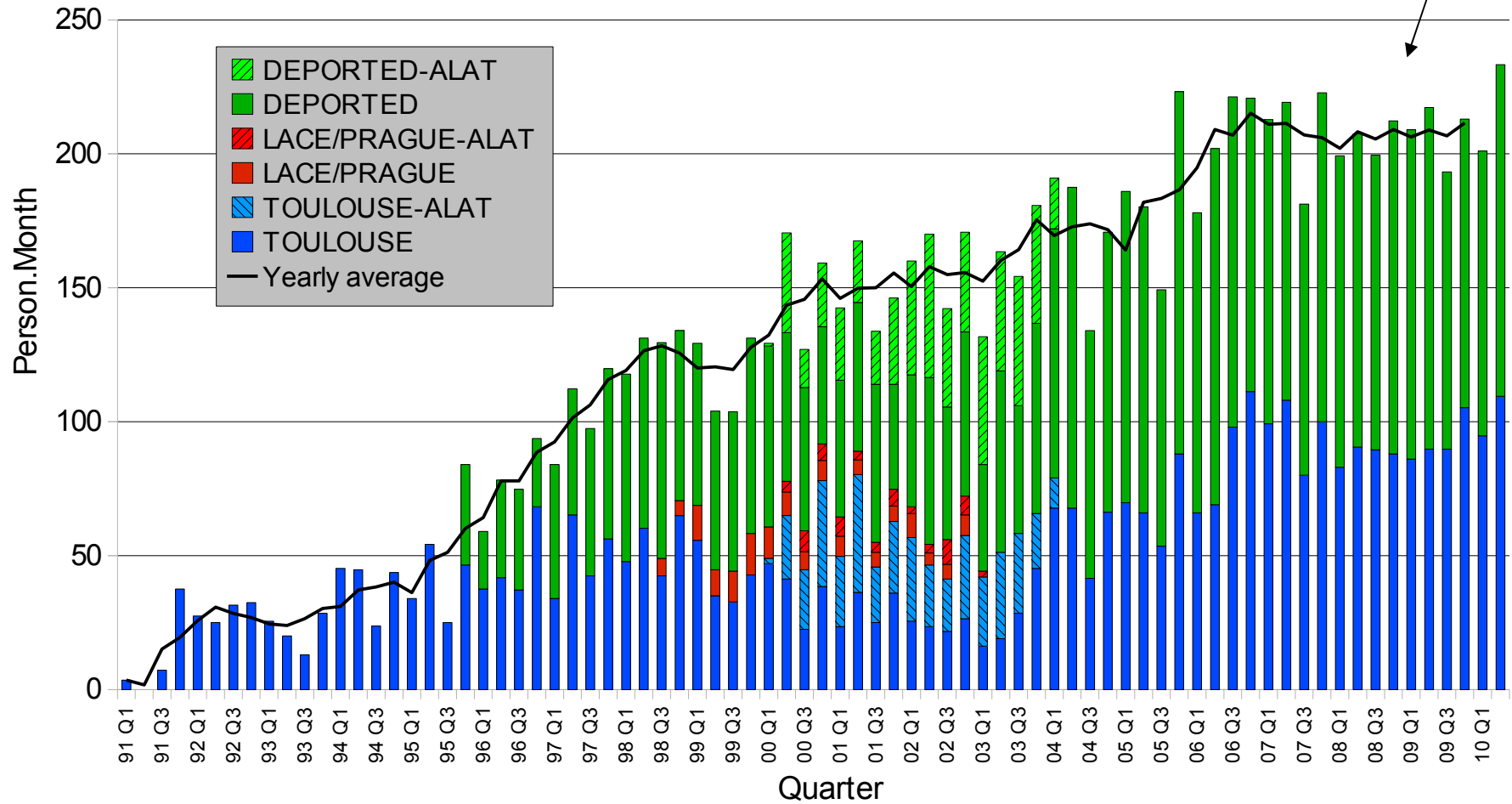
Country	MoU1 (30/06/1996)		MoU2 (31/03/2001)		MoU3 (30/06/2005)		MoU4 (30/06/2010)	
	Person.Month	Breakdown	Person.Month	Breakdown	Person.Month	Breakdown	Person.Month	Breakdown
FRANCE	217.00	30.9%	684.50	22.6%	1359.50	23.4%	2965.75	29.9%
CZECH REP	94.00	13.4%	376.75	12.4%	600.50	10.3%	902.75	9.1%
HUNGARY	79.50	11.3%	251.00	8.3%	522.00	9.0%	818.50	8.3%
BELGIUM	-	-	191.00	6.3%	459.00	7.9%	786.25	7.9%
SLOVAKIA	37.00	5.3%	214.25	7.1%	403.50	7.0%	582.75	5.9%
ROMANIA	107.50	15.3%	319.25	10.5%	454.50	7.8%	558.50	5.6%
MOROCCO	64.00	9.1%	240.25	7.9%	374.00	6.4%	539.50	5.4%
CROATIA	14.00	2.0%	136.75	4.5%	308.00	5.3%	527.25	5.3%
AUSTRIA	20.50	2.9%	98.00	3.2%	282.75	4.9%	511.50	5.2%
SLOVENIA	26.50	3.8%	156.50	5.2%	286.50	4.9%	436.25	4.4%
POLAND	21.00	3.0%	147.00	4.8%	255.50	4.4%	386.25	3.9%
PORTUGAL	-	-	96.50	3.2%	189.50	3.3%	328.75	3.3%
BULGARIA	21.00	3.0%	114.75	3.8%	181.50	3.1%	222.00	2.2%
ALGERIA	-	-	-	-	6.5	0.1%	174.00	1.8%
TUNISIA	-	-	8.50	0.3%	122.00	2.1%	136.50	1.4%
TURKEY	-	-	-	-	-	-	38.00	0.4%
<b>TOTAL</b>	<b>702.00</b>	<b>100.0%</b>	<b>3035.00</b>	<b>100.0%</b>	<b>5805.25</b>	<b>100.0%</b>	<b>9914.50</b>	<b>100.00%</b>

~ 900 person.year  
 ~ 45 « full-time » persons per year

# Total participation in the ALADIN project

70 person.month

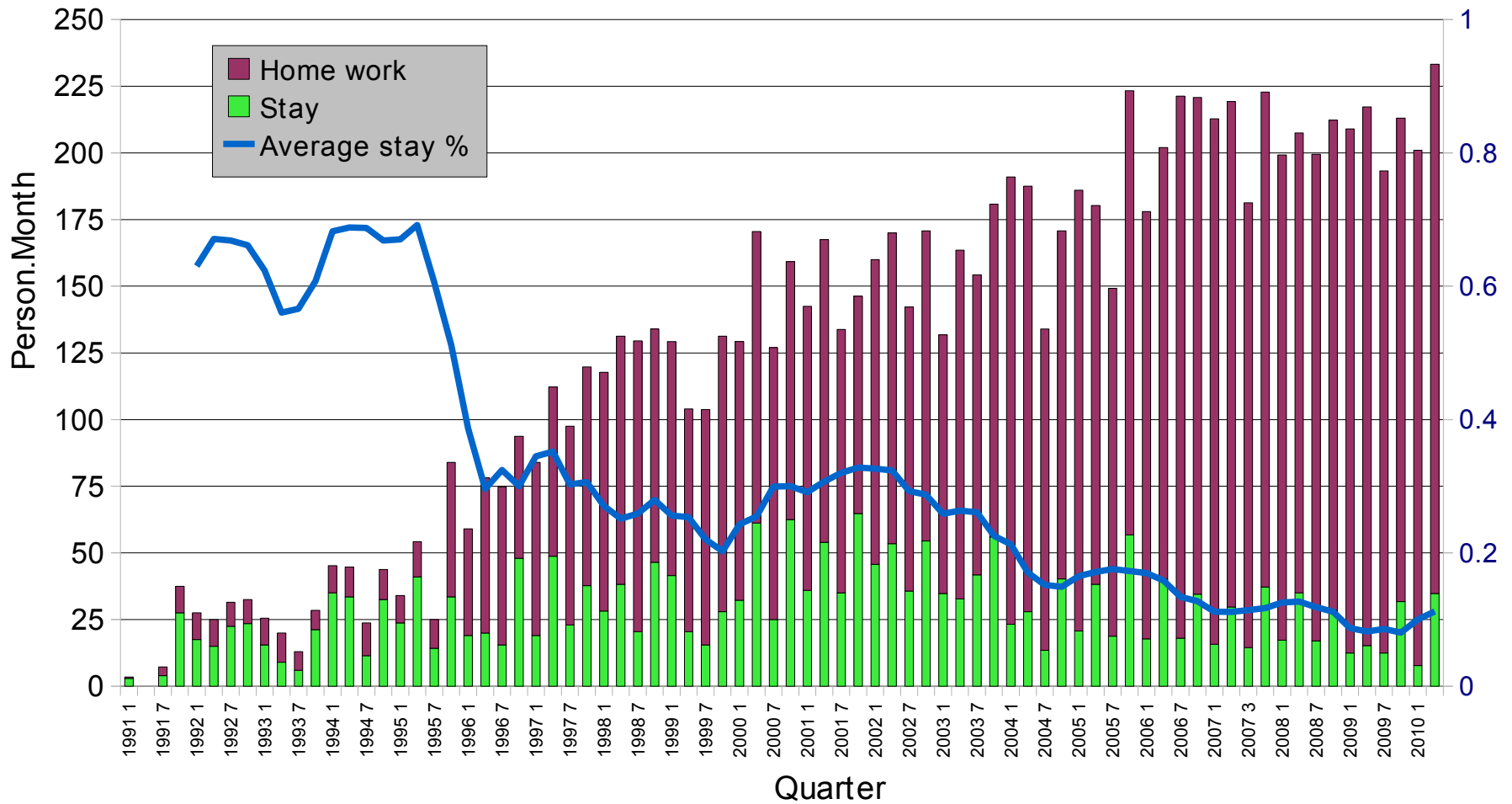
## Evolution of the quarterly manpower



Updated on July 1, 2010

# Total participation in the ALADIN project

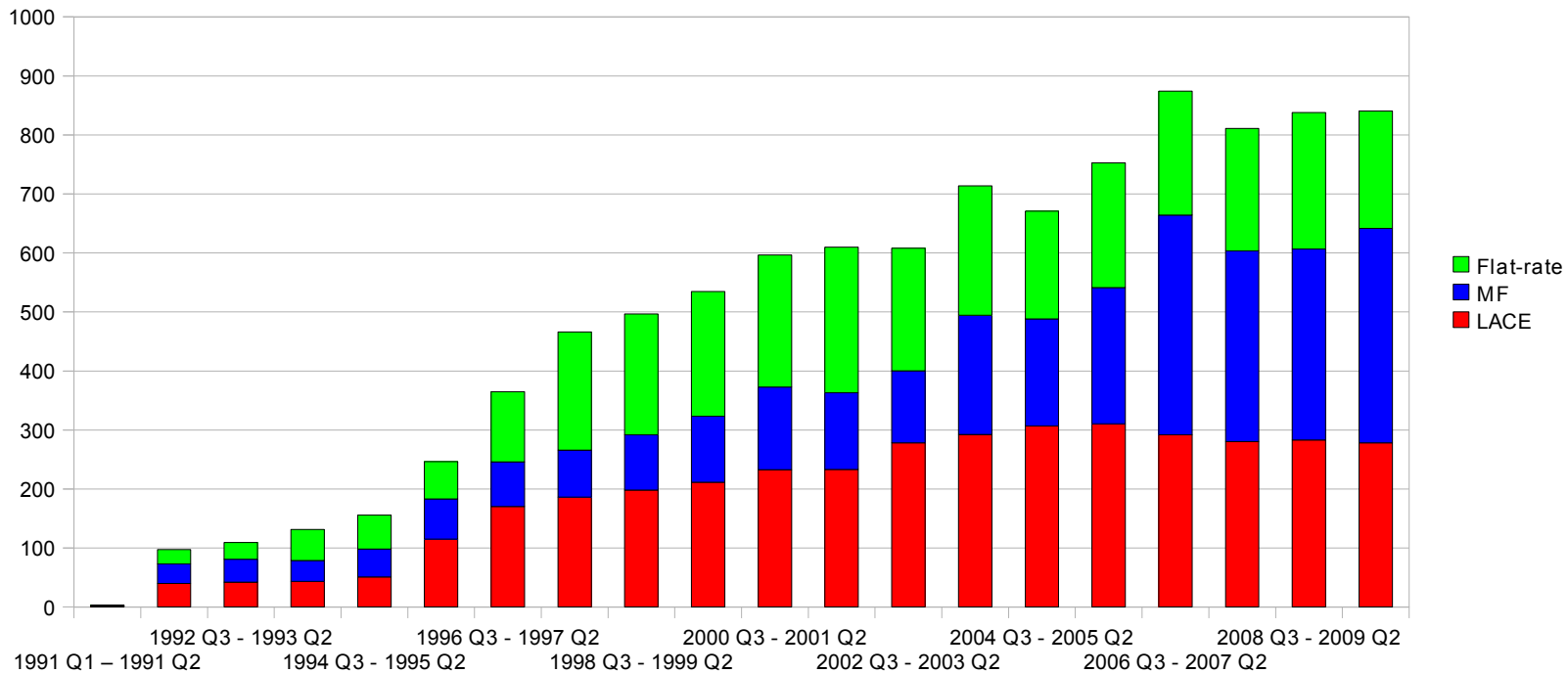
## Evolution of the quarterly manpower



Updated on July 1, 2010

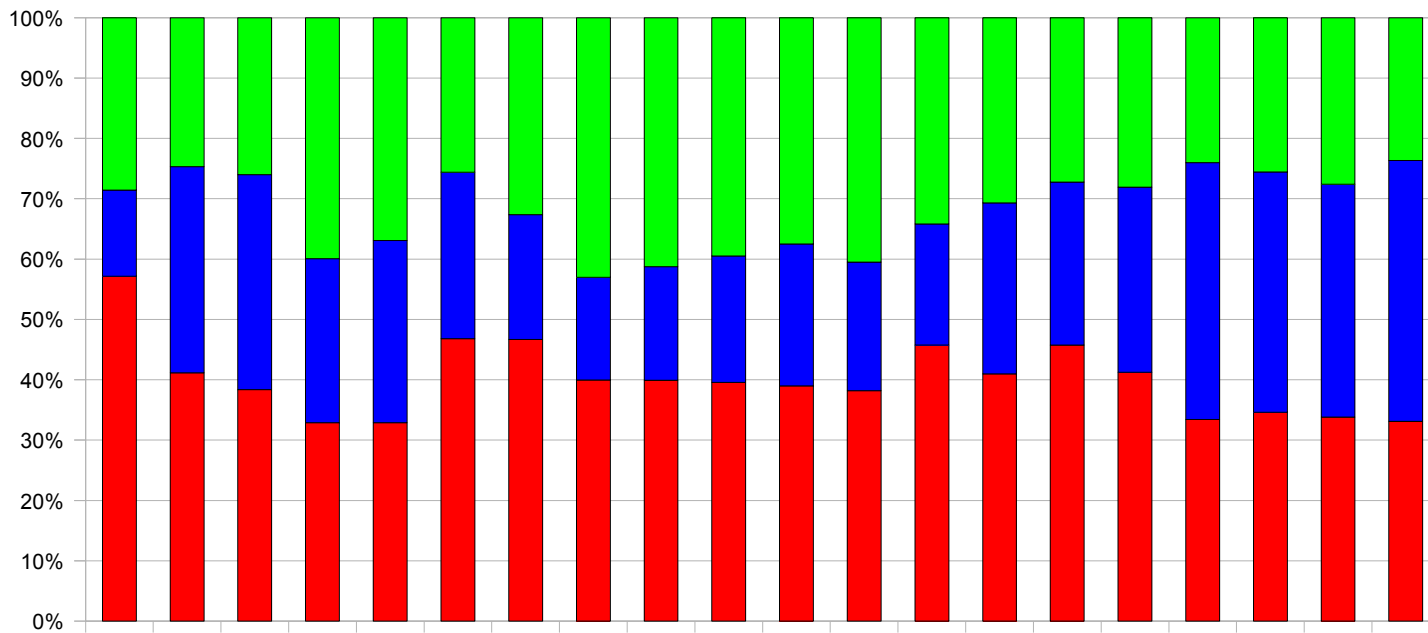
# Breakdown of the participation in the ALADIN project

Yearly person.months

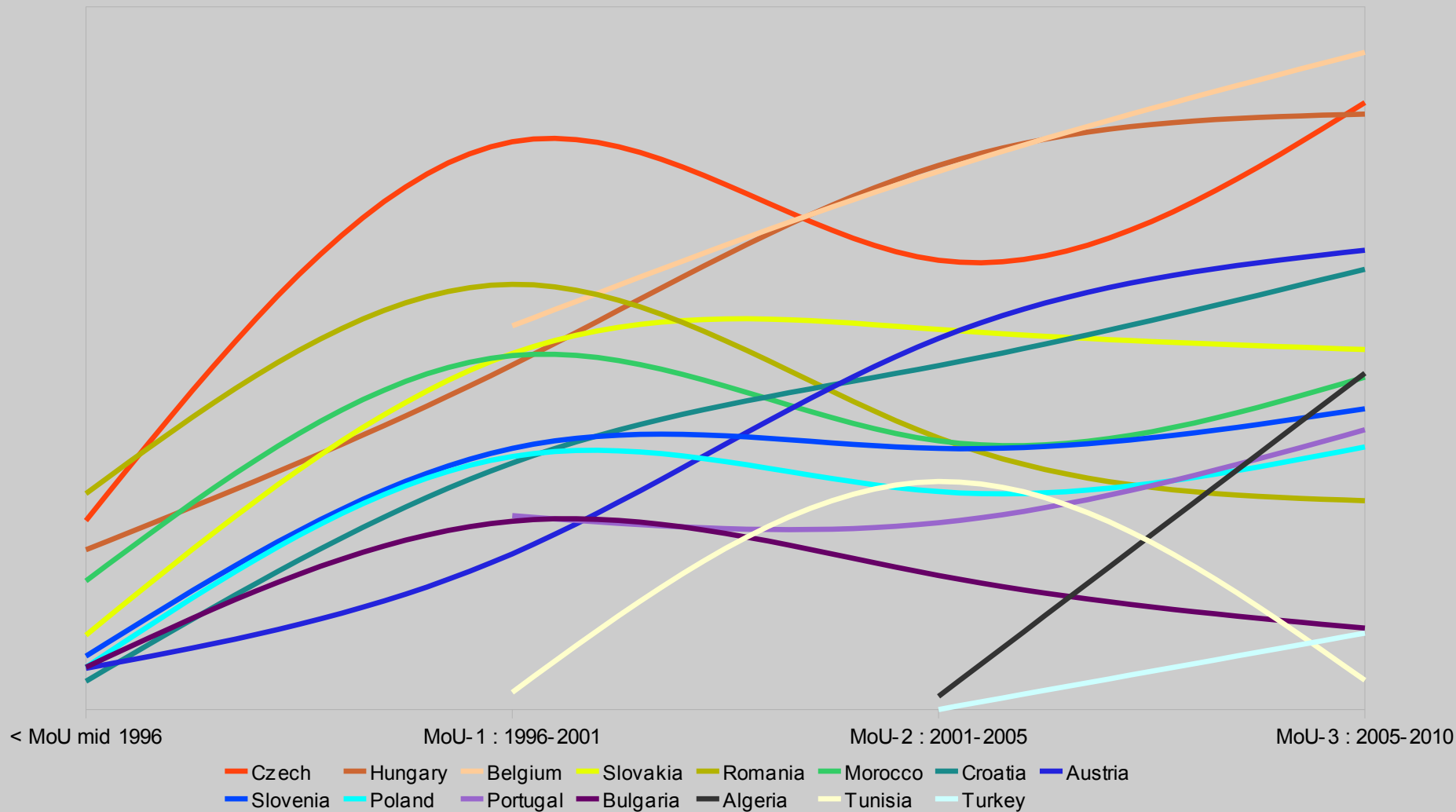


# Breakdown of the participation in the ALADIN project

Yearly percentage

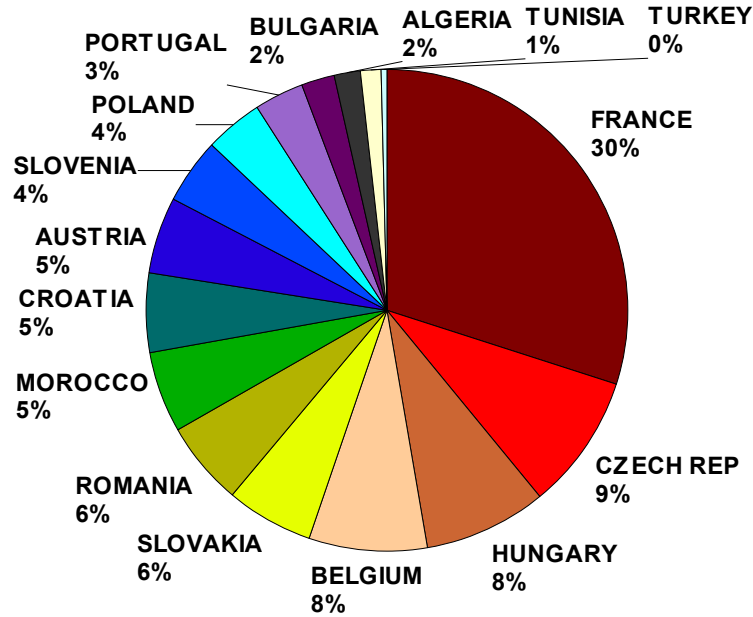


# ALADIN participation during MoUs



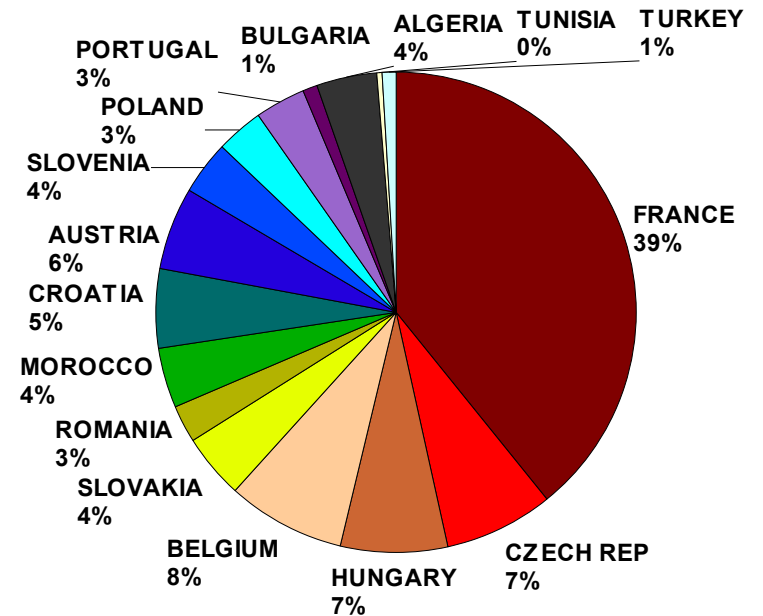
# Total participation in ALADIN

Breakdown  
of the  
person.months  
by  
country



# MoU-3 participation

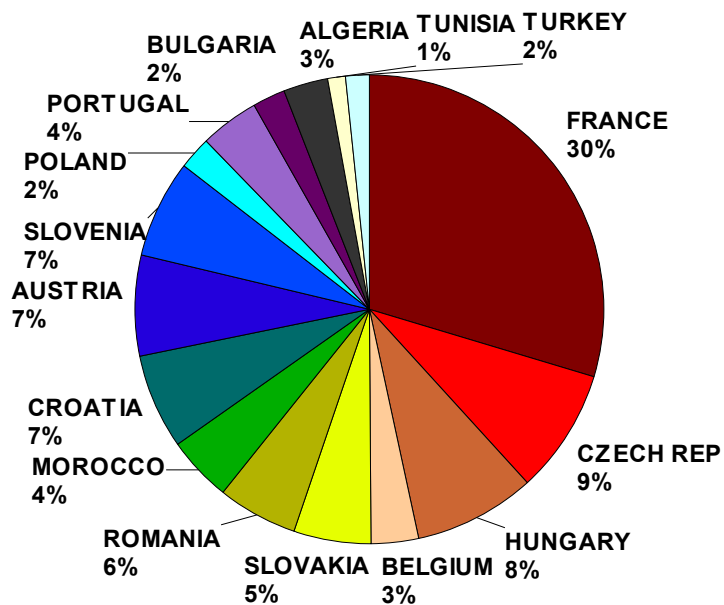
Breakdown  
of the  
person.months  
by  
country



Updated on July 1, 2010

# Total participation ALADIN

Breakdown  
of the  
participants  
by  
country

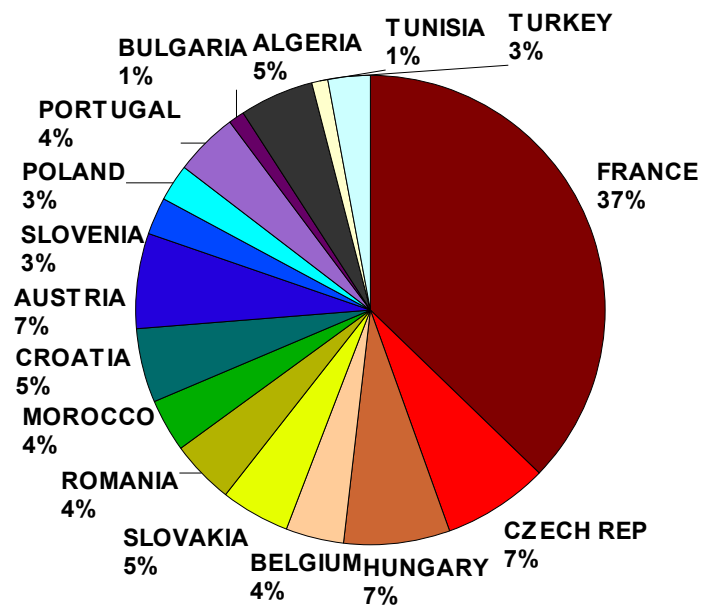


250 ALADINers (MoU3)  
55 pers > half-time > 50% effort

Updated on July 1, 2010

# MoU-3 participation

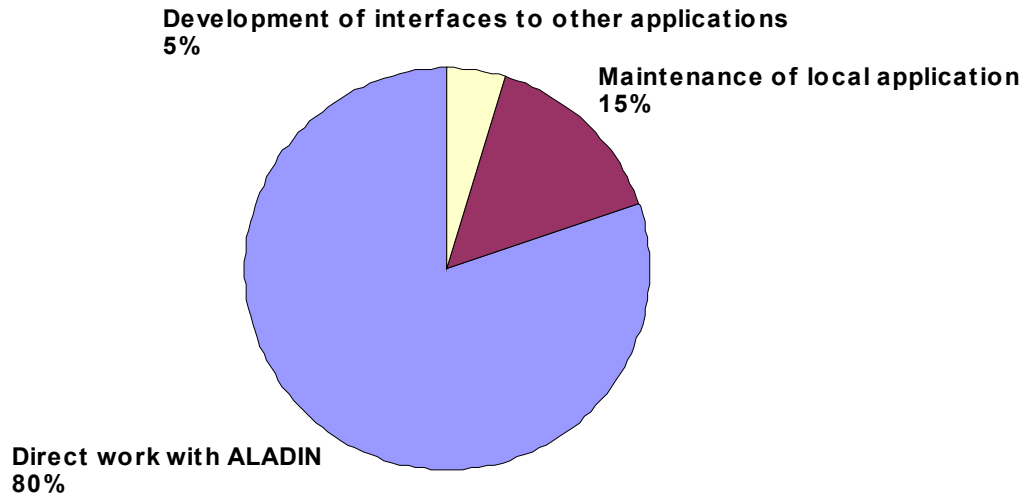
Breakdown  
of the  
participants  
by  
country





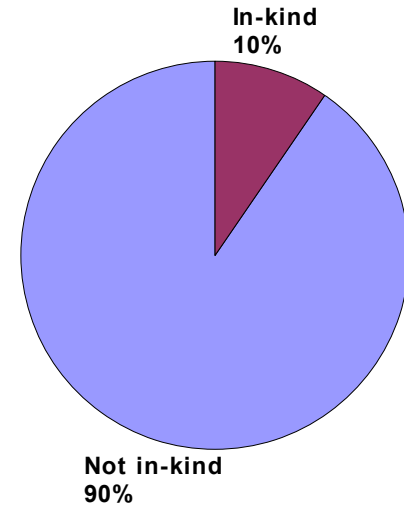
# Breakdown of the ALADIN effort by activity

Since July 2001



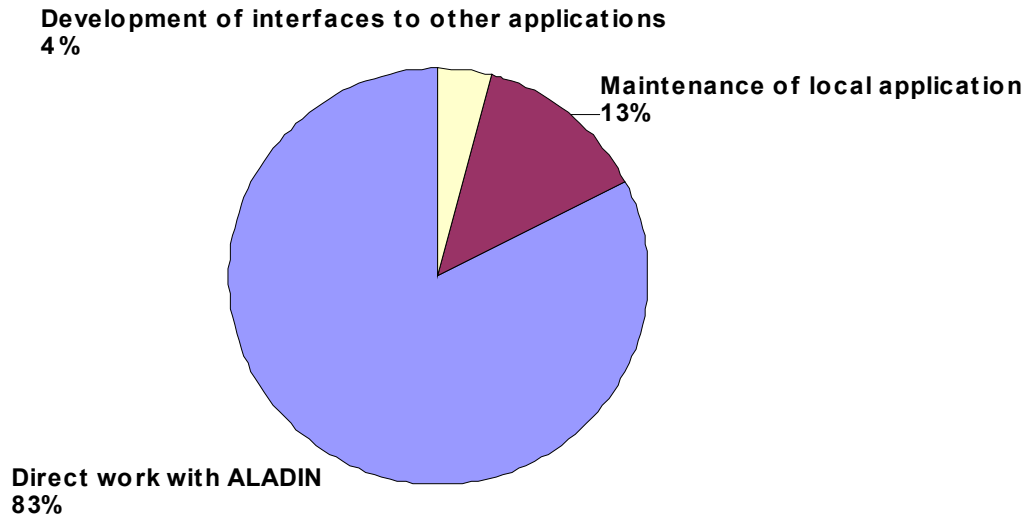
# Part of "in-kind" in the ALADIN effort (manpower)

since January 2007



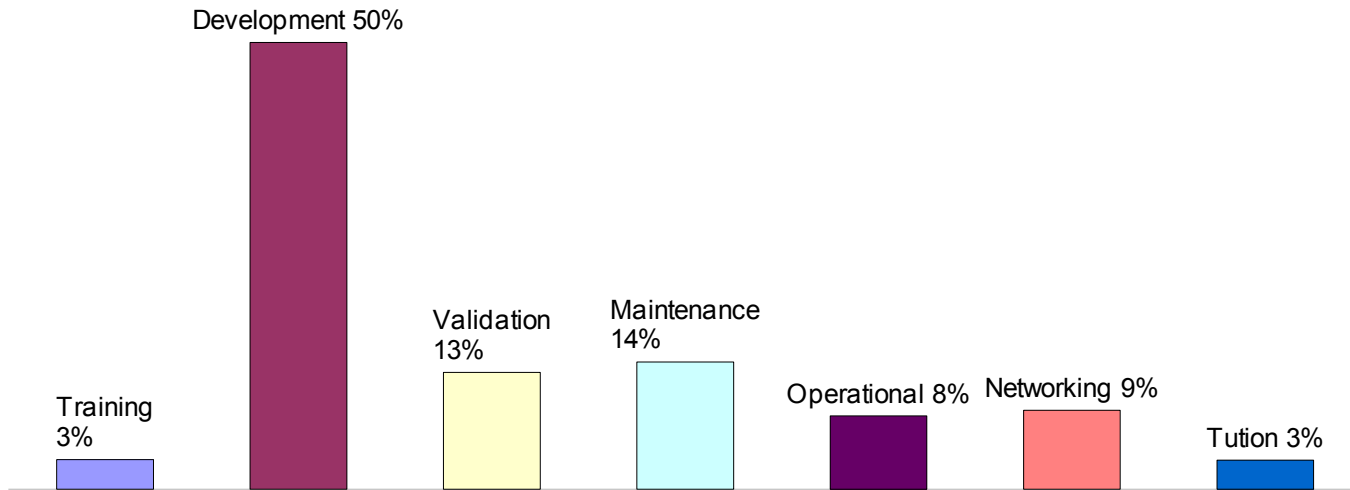
# Breakdown of the ALADIN effort by activity

during MoU-3

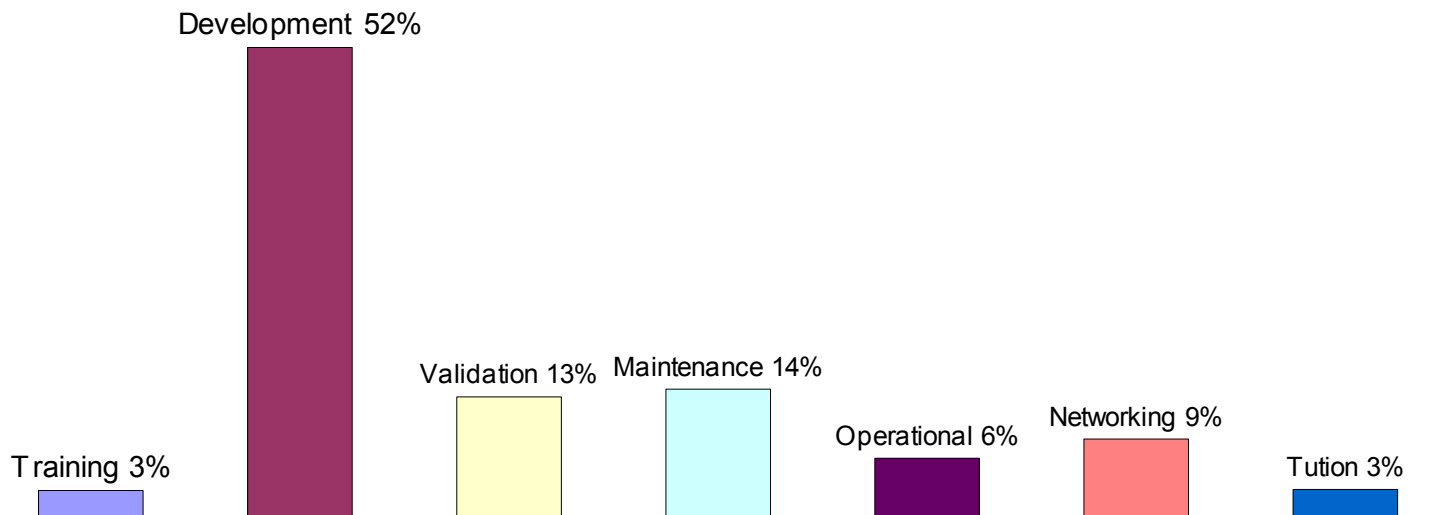


Updated on July 1, 2010

## Breakdown of the ALADIN work by type since July 2001



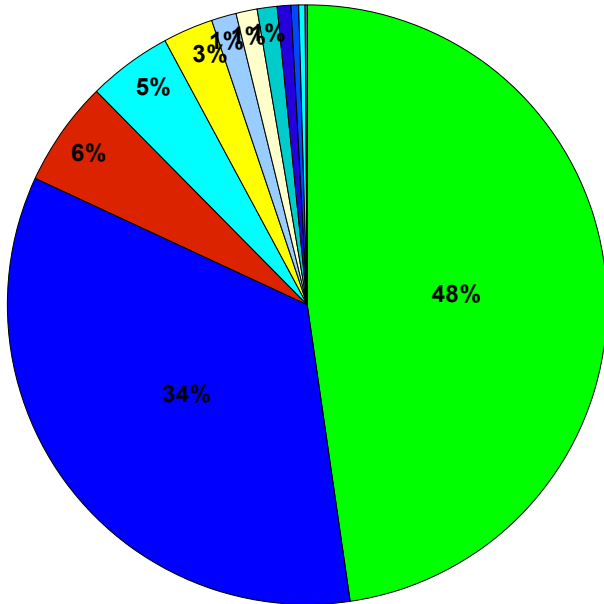
## Breakdown of the ALADIN work by type during MoU-3



# Total participation in ALADIN

Breakdown of the person.months by money funding

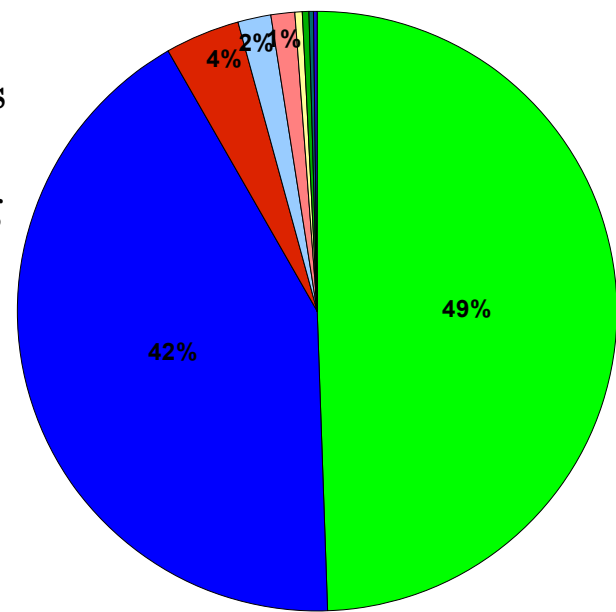
- NMS
- METEO-FRANCE
- LACE
- FRENCH MINISTRY
- ALATNET
- PHD
- EU
- AMBASSY
- FLAT-RATE
- OTHERS
- BILATERAL
- EUMETNET



# MoU-3 participation

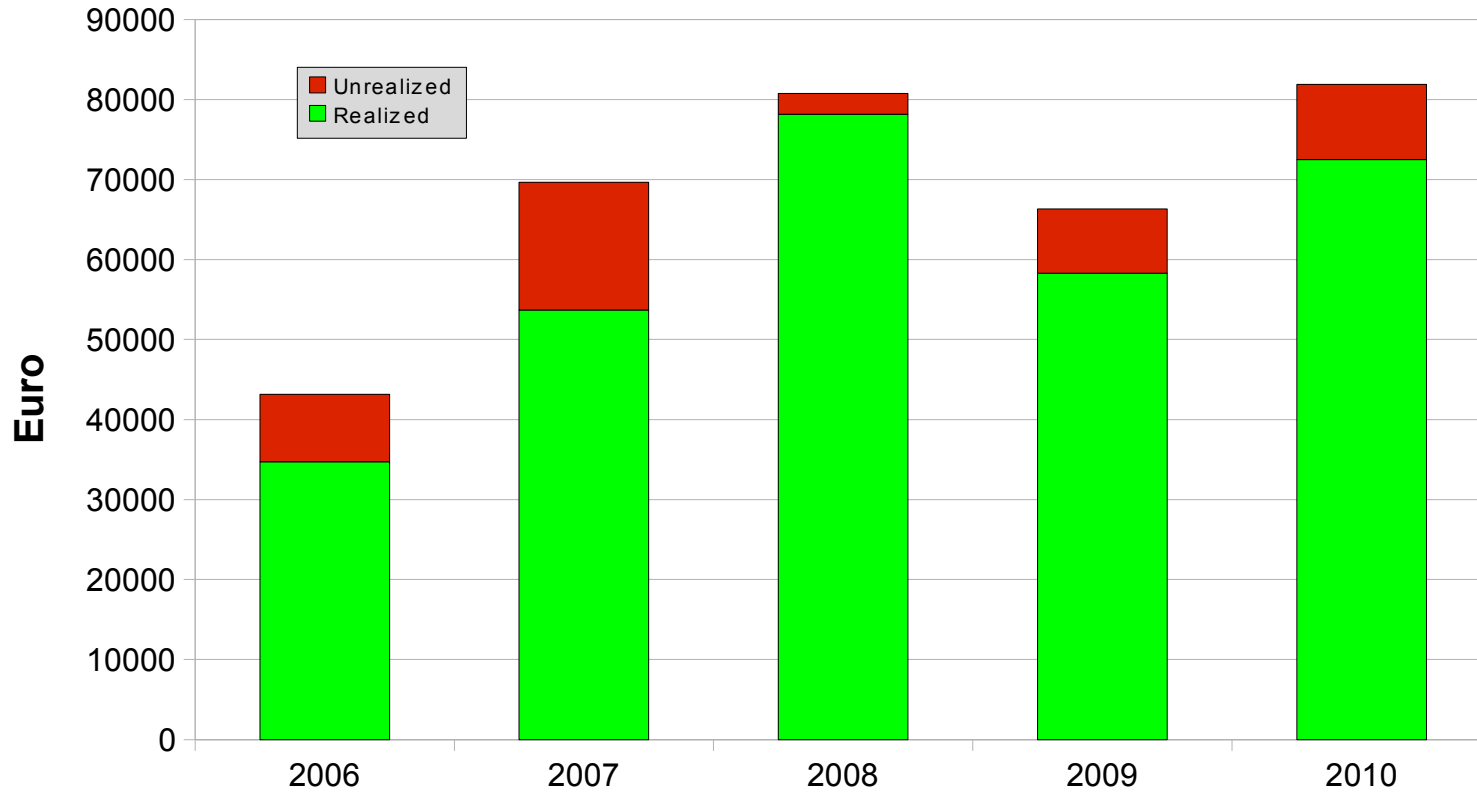
Breakdown of the person.months by money funding

- NMS
- METEO-FRANCE
- LACE
- FLAT-RATE
- FRENCH MINISTRY
- EU
- BILATERAL
- EUMETNET
- OTHERS



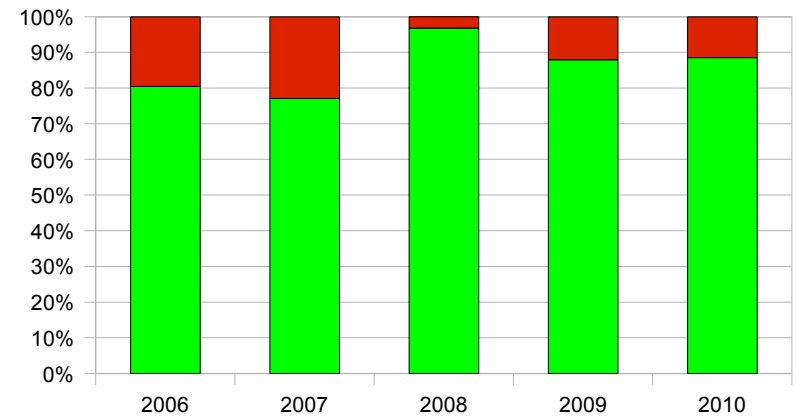
Updated on July 1, 2010

# Flat-rate expenses (yearly planned budget)

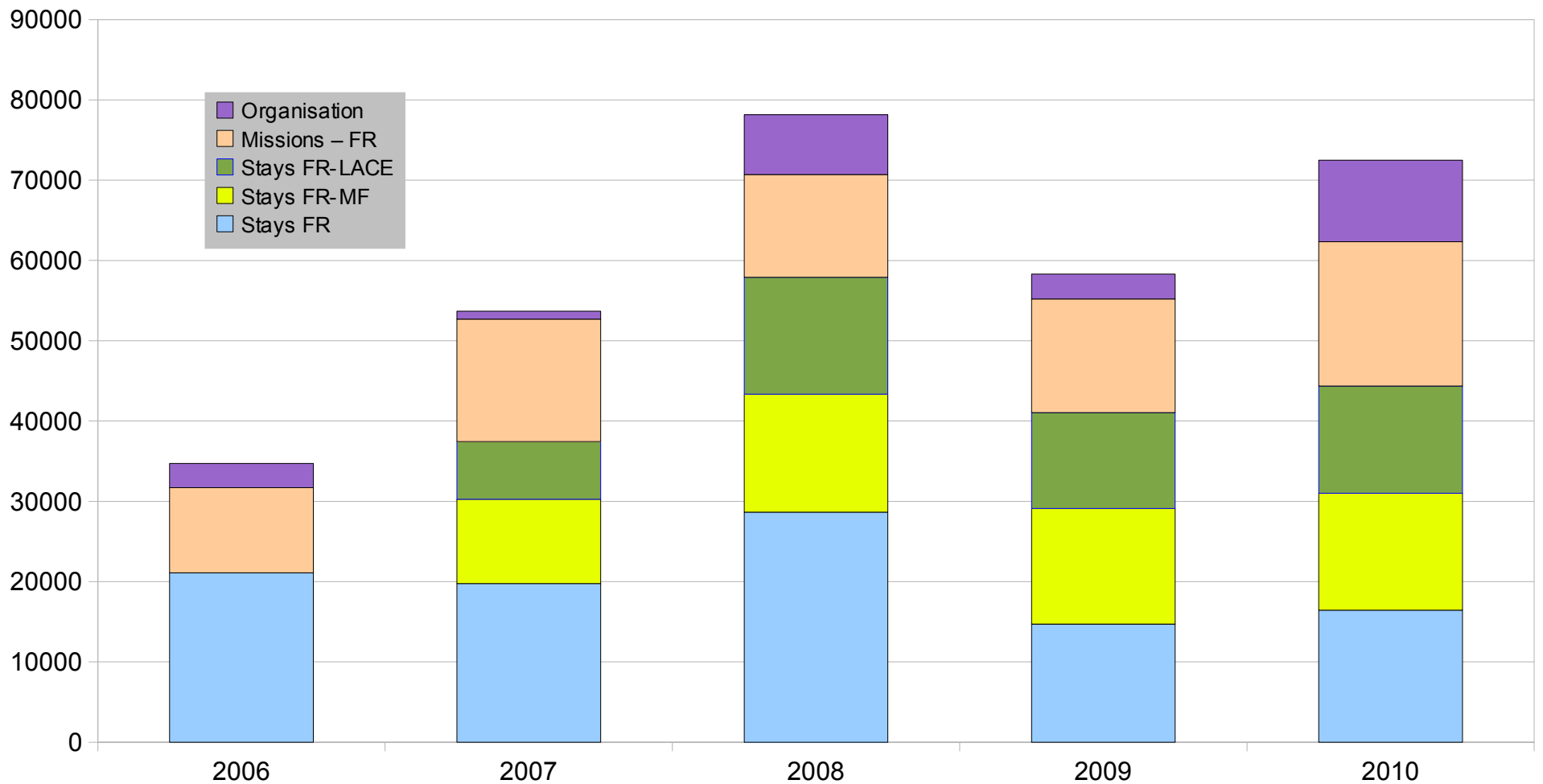


90%

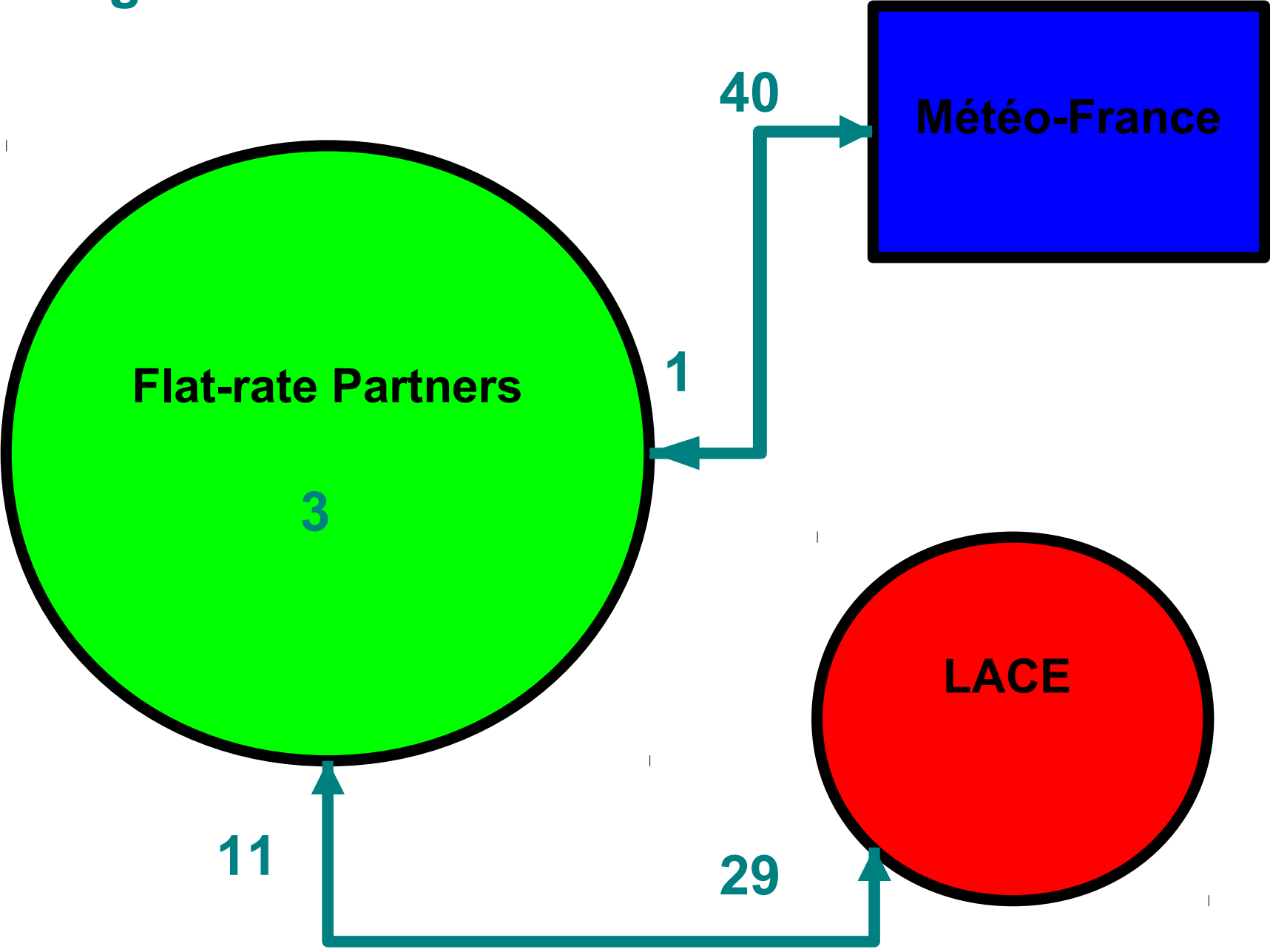
## Flat-rate expenses (yearly planned budget)



## Breakdown of (realised) flat-rate expenses



# Stays on Flat-Rate budget During MoU3



Unit : person.month

# Stays mid-2005 to mid-2010

## Total effort

