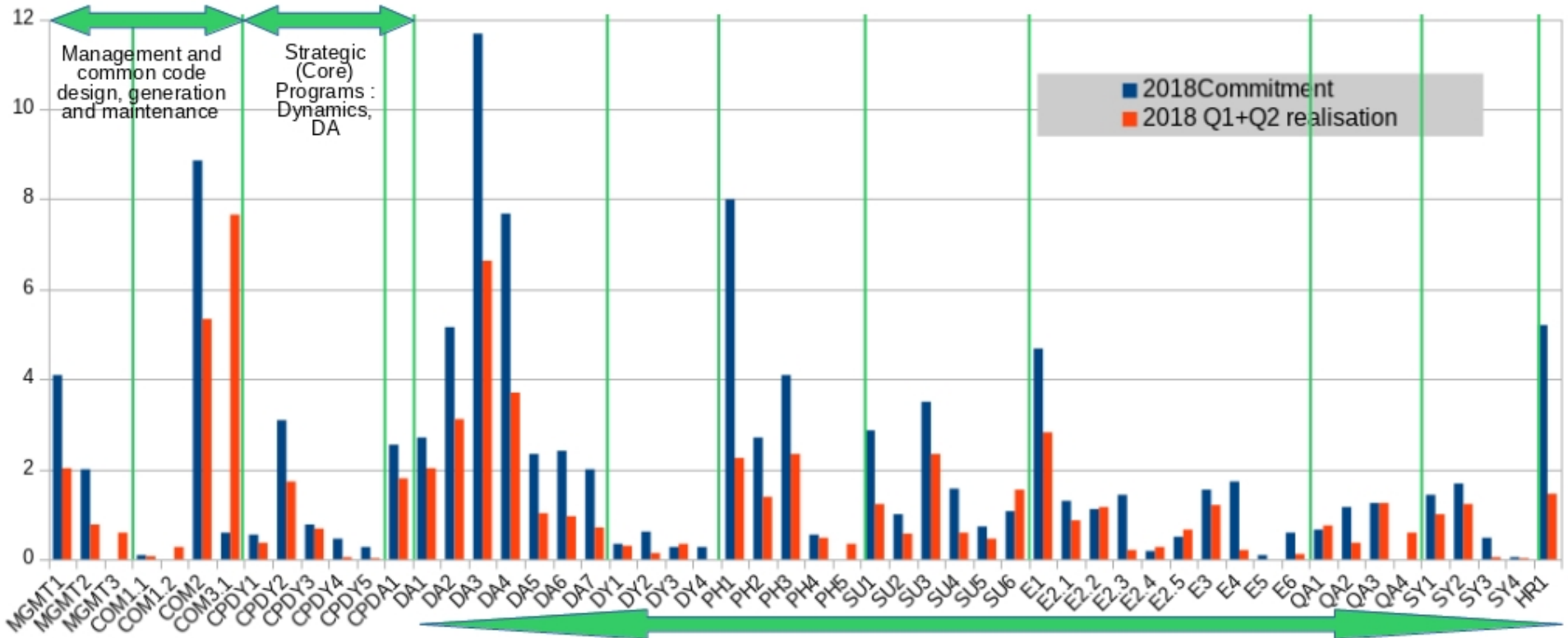


3.2

Manpower (in F.T.E.) in 2018 RWP Work Packages

Committed for 2018 and Realised during the first semester of 2018

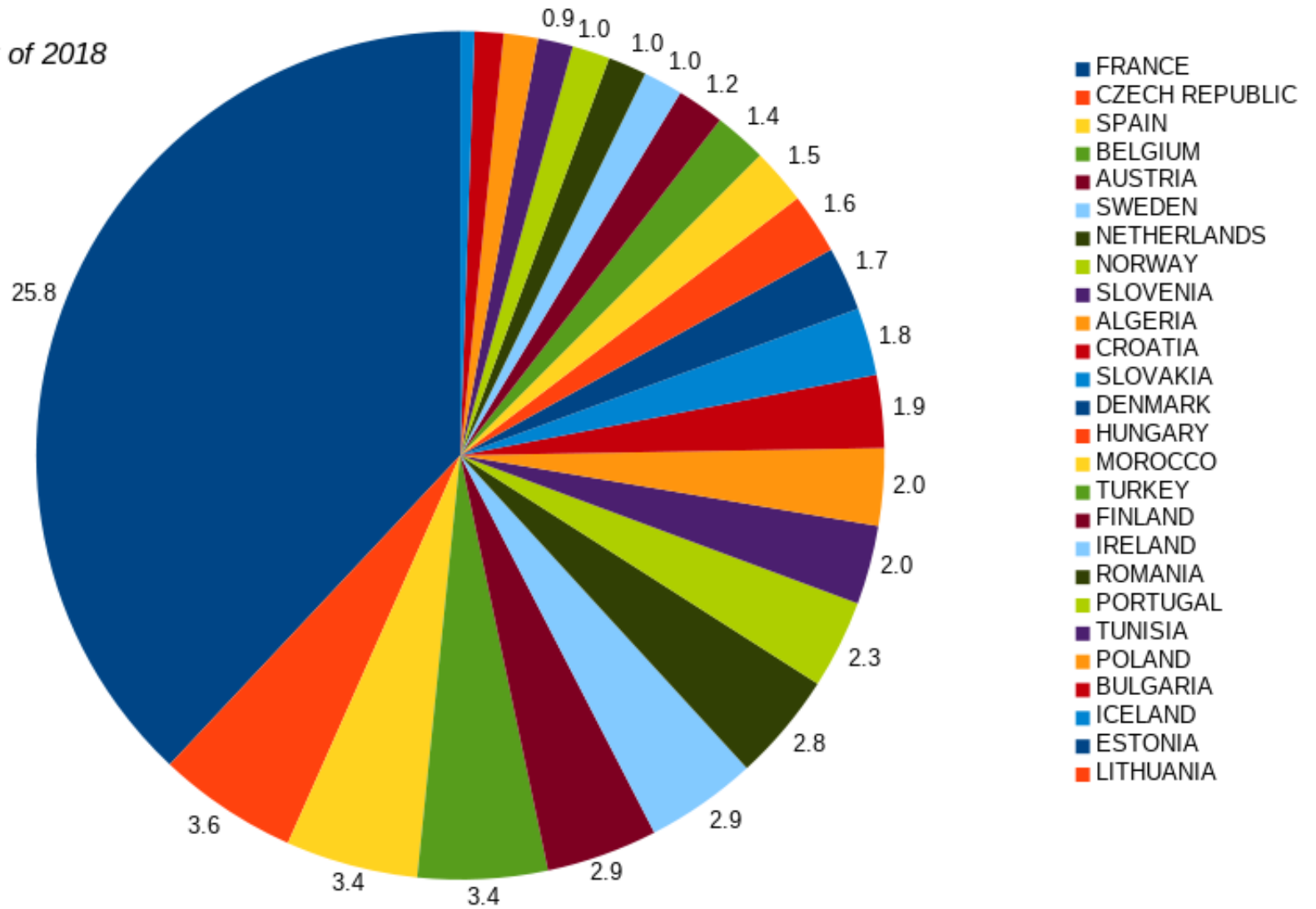


Prospective R&D activities :
 Atmospheric data assimilation, Dynamics, Atmospheric physics parametrizations, Surface analysis and modelling, Probabilistic forecasting, Quality assessment and monitoring, Technical code and system development, onwards high-resolution modelling

3.2

Manpower invested in the ALADIN-HIRLAM Rolling Work Plan

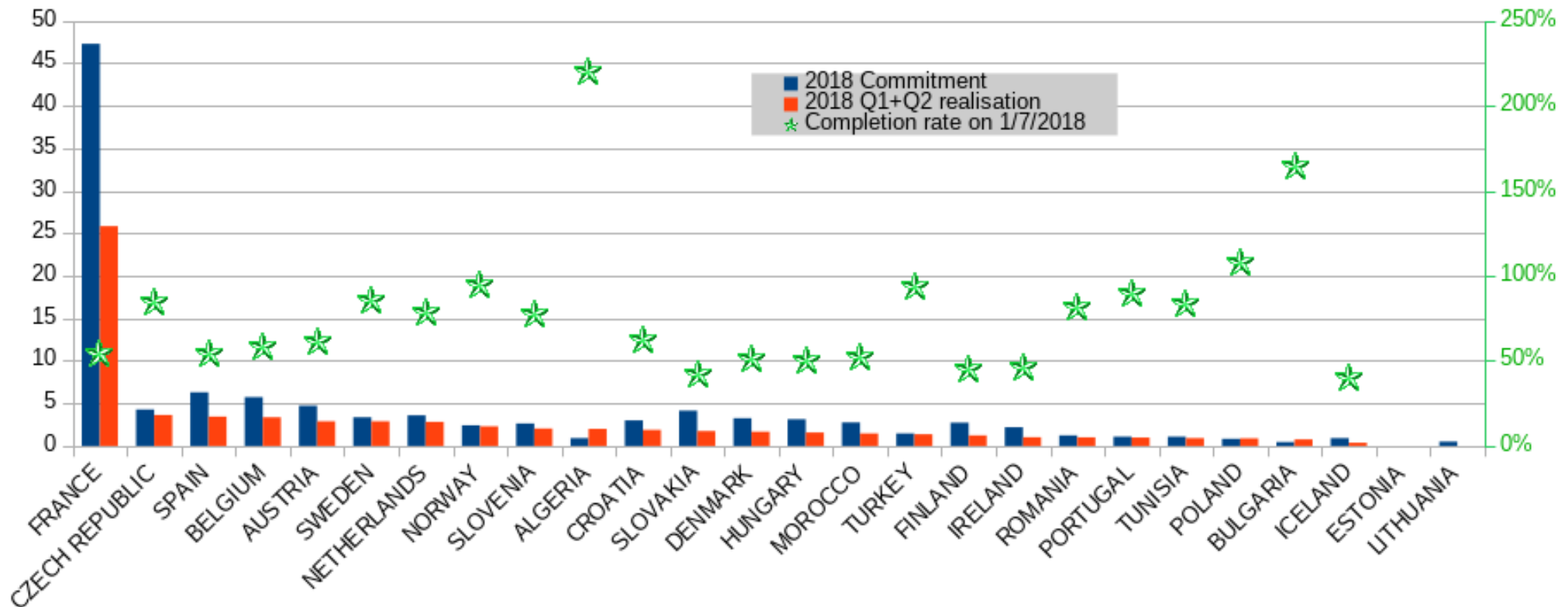
during the 1st semester of 2018
in F.T.E.



3.2

Manpower (in F.T.E.) in RWP2018 tasks, by Partners

Committed for 2018 (whole year) and Realised (during the first semester of 2018)



Partners by decreasing order of their invested manpower in the RWP2018

3.2

Manpower in 2018 Rolling Work Plan

Committed (inner circle) . Q1+Q2 realisation (outer circle)

- MF
- HIRLAM
- LACE
- FLAT-RATE

