

CORRECTION FOR THE ISBA-SNOW EXERCISE

Experiment 'Col de Porte' 1996/1997 (French Alps)

D.1 OPTIONS.nam

Scheme for soil and vegetation : ISBA / DIF (multilayer)

Soil Layers : 10

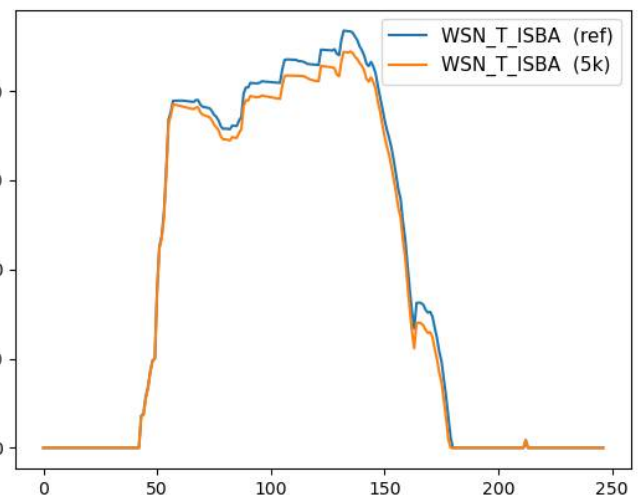
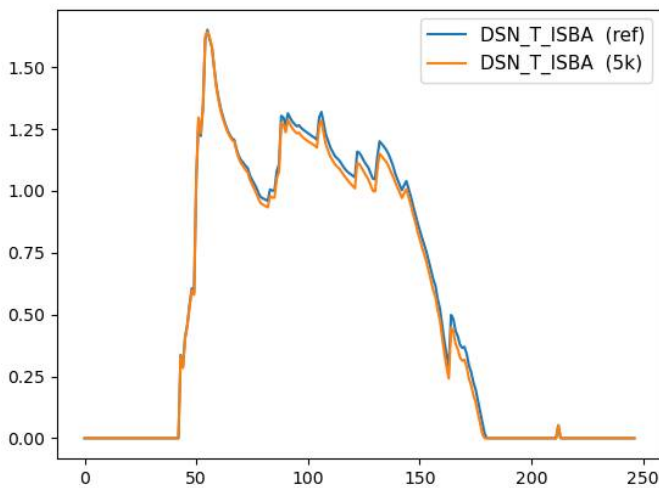
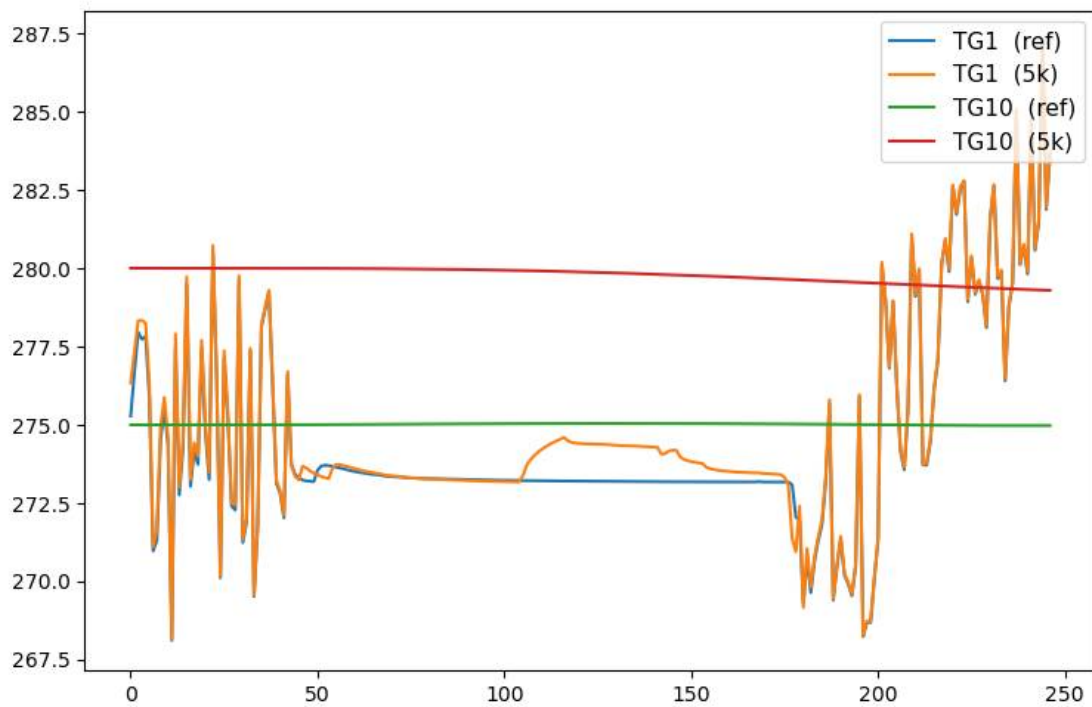
Total soil depth : 10m

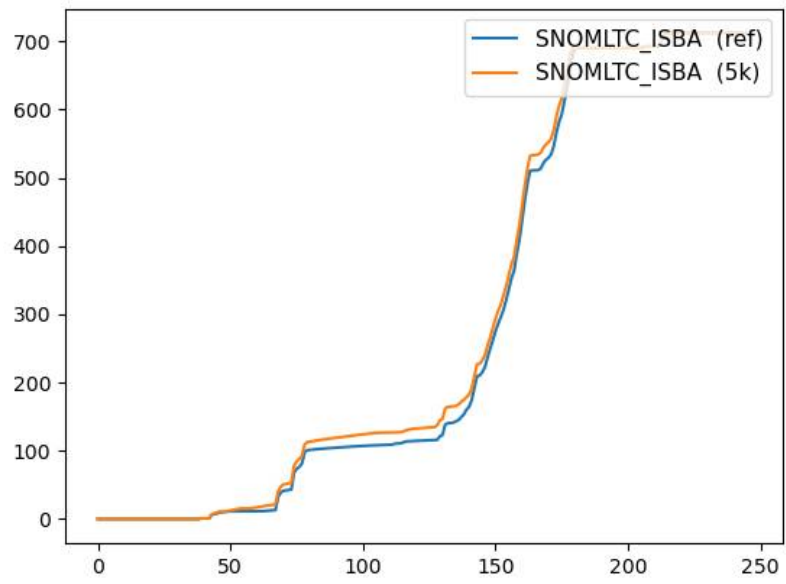
Root depth: 60cm (layer 5, rootfrac = 1)

Percentage of vegetation : 100%

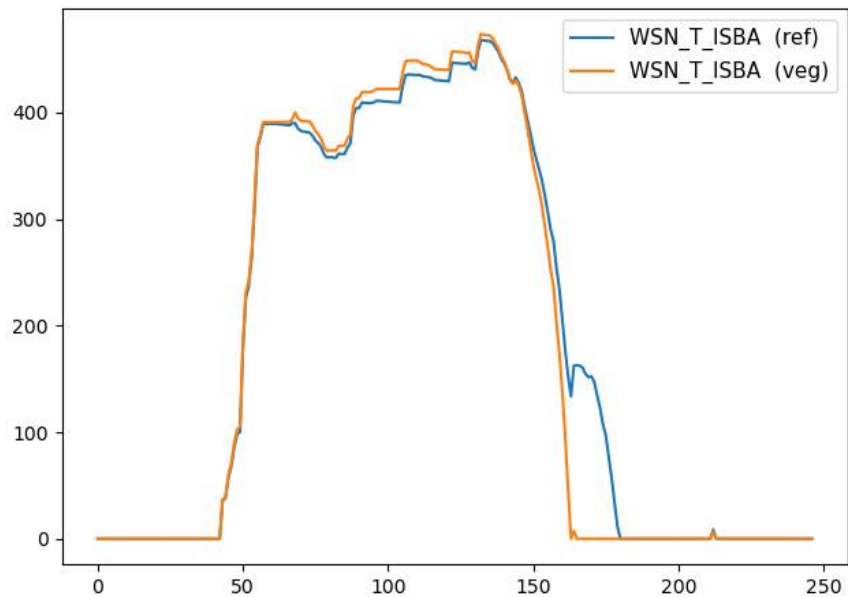
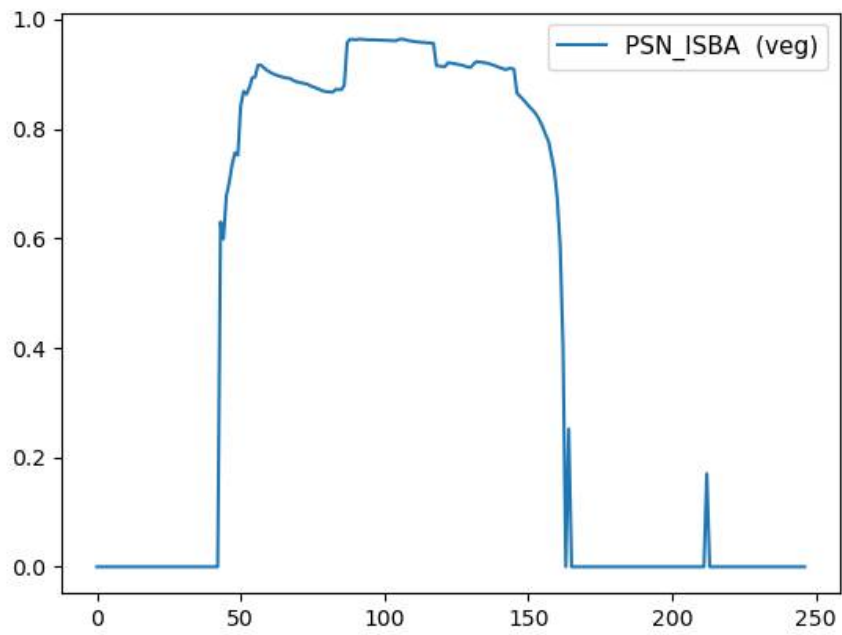
Snow scheme : CROCUS

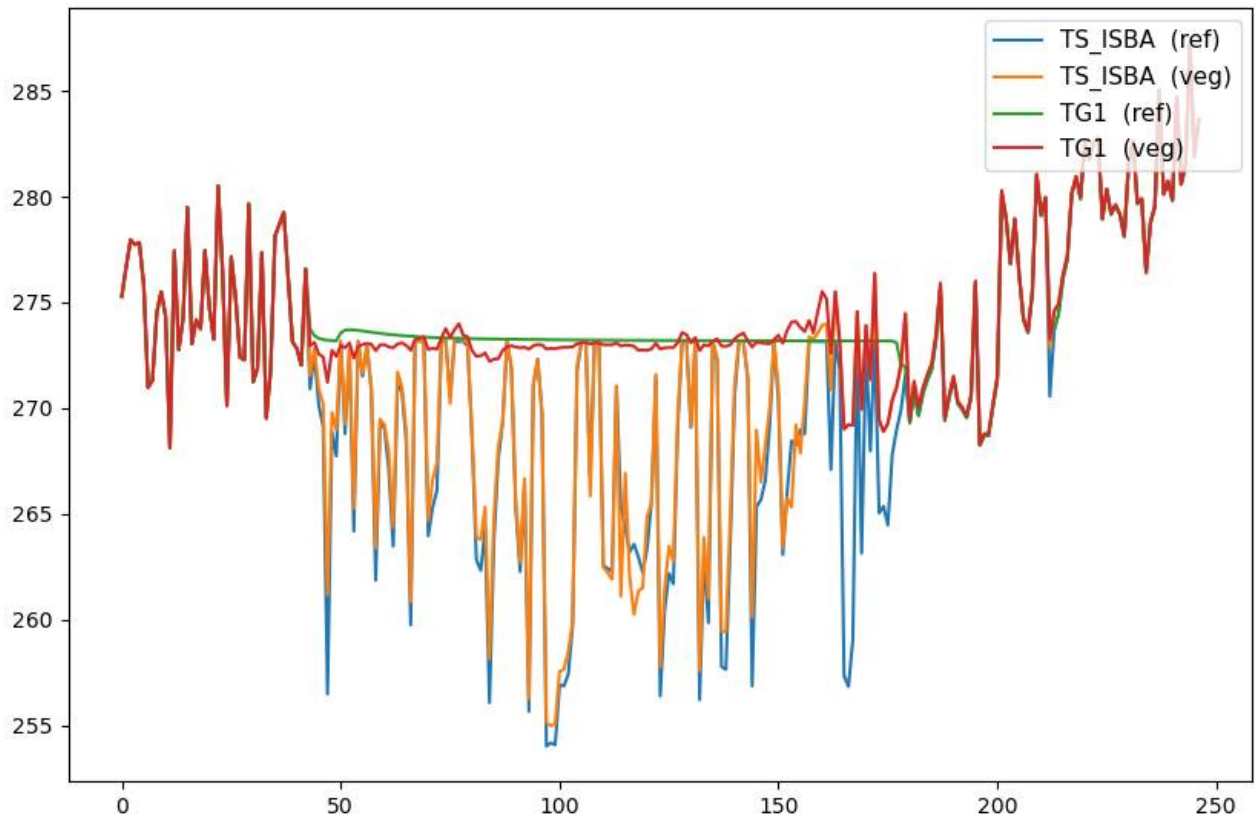
D.3 +5K experiment



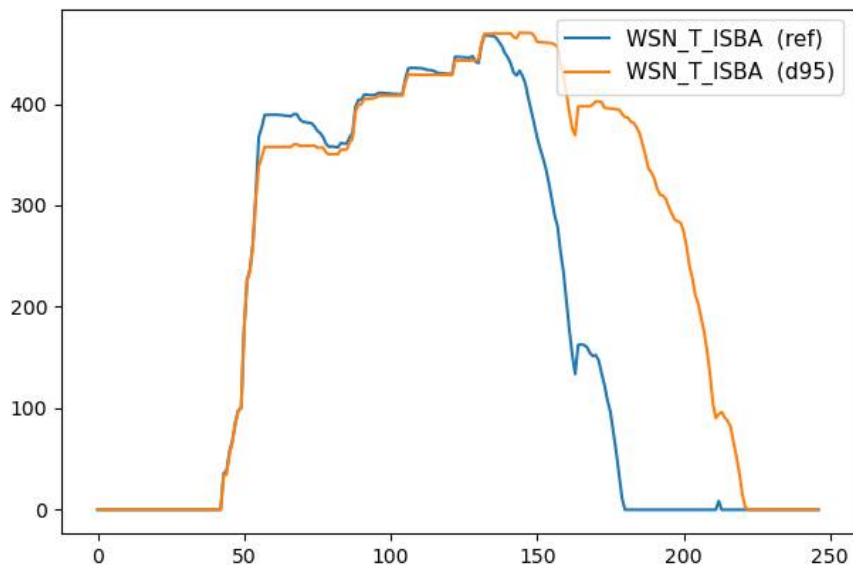


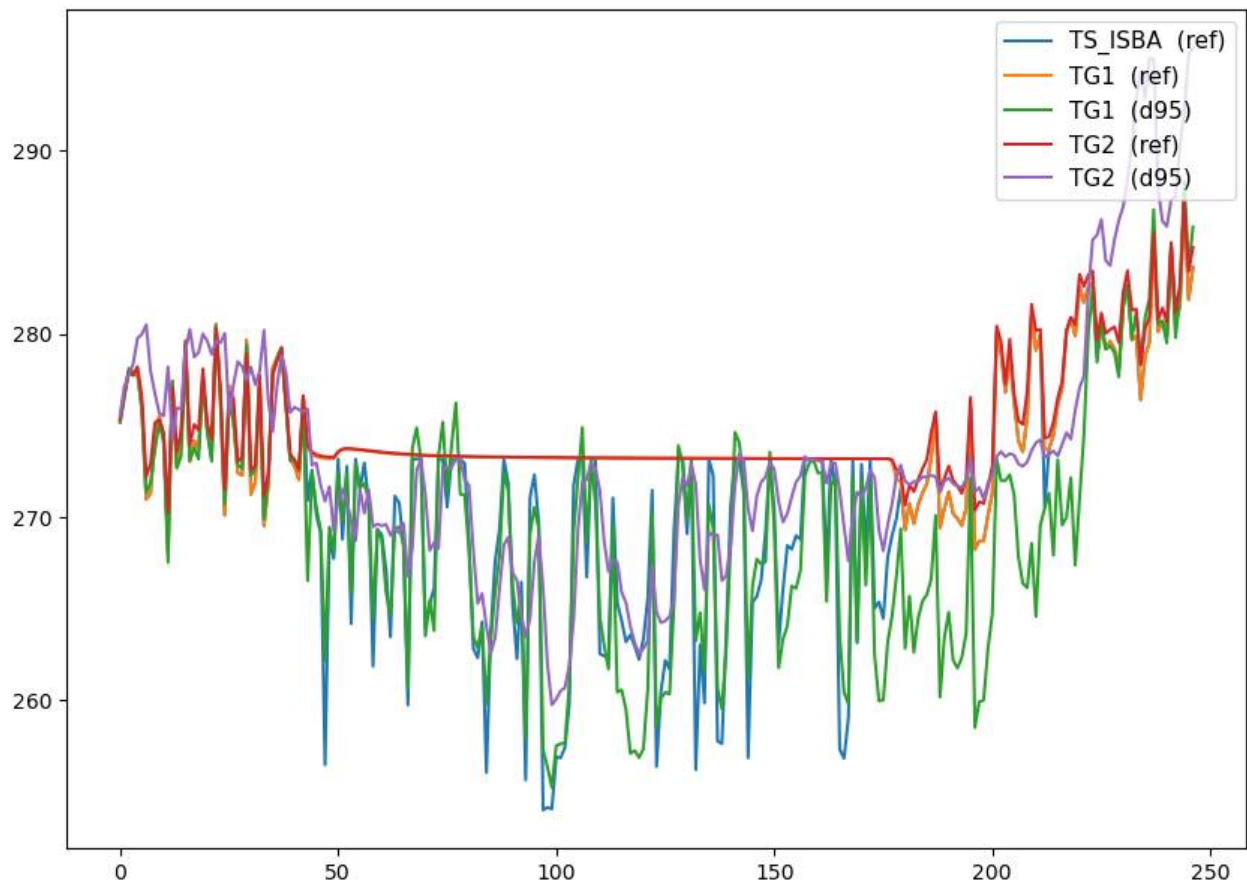
D.4 Comparison with vegetation





D.5 Comparison with a simple soil and snow scheme





In experiment DIF/CROCUS, TG1 soil temperature at 1cm, TG2 soil temperature 5cm. TS_ISBA averaged grid cell temperature.

In experiment 3-L/D95, TG1 temperature of composite soil/snow/vegetation: in winter equal to snow temperature, in summer equal to ground/vegetation temperature. TG2 is the daily averaged of TG1.