



Part 3

Summary of the 25 FASTEX cases

by
Alain Joly,
Béatrice Pouponneau,
Geneviève Jaubert,
Catherine Piriou.

*Météo-France, URA CNRS 1357, Groupe d'Etude de l'Atmosphère
Météorologique, Toulouse, France.*

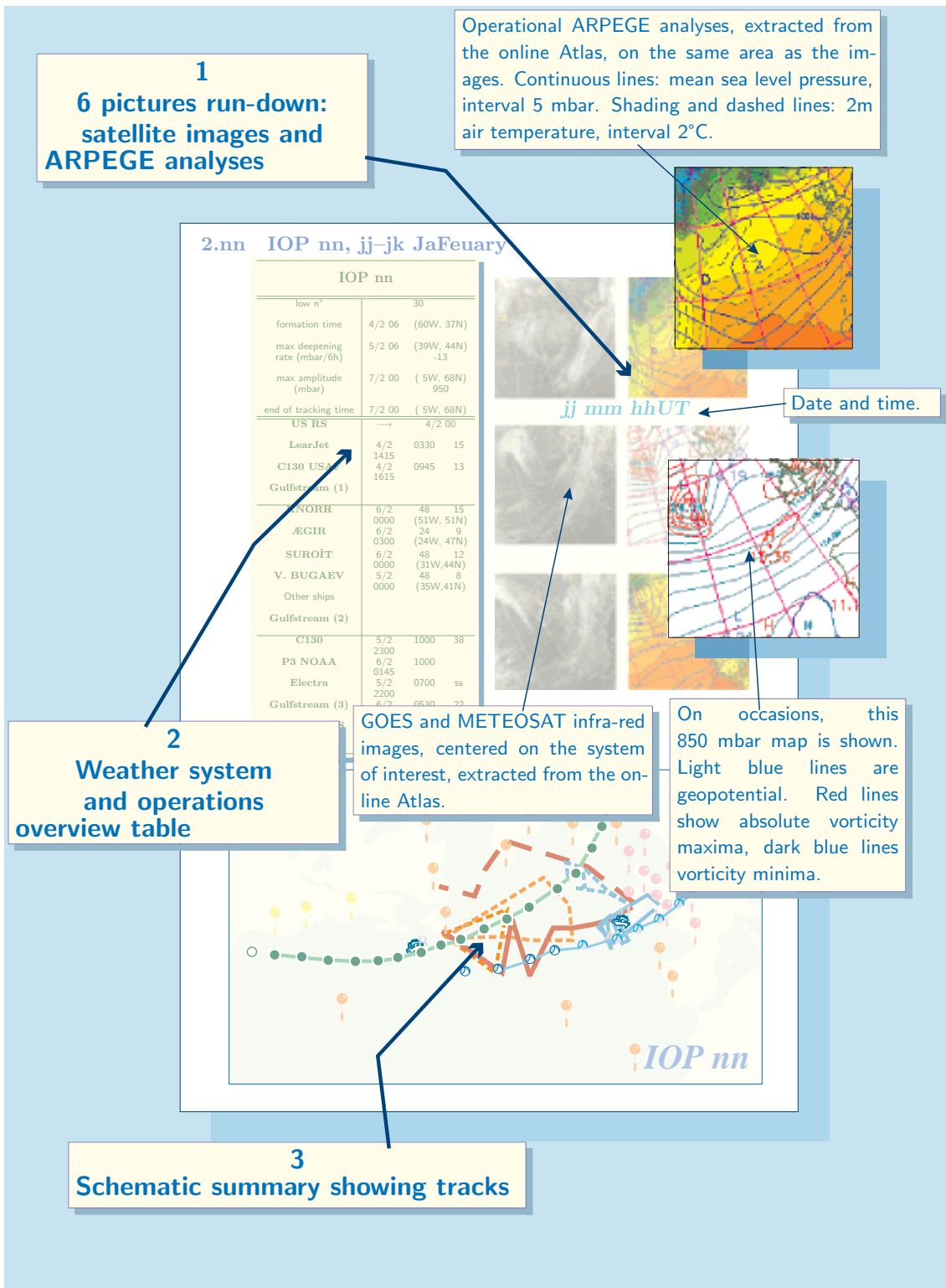
3.1 Reading the graphical case summary

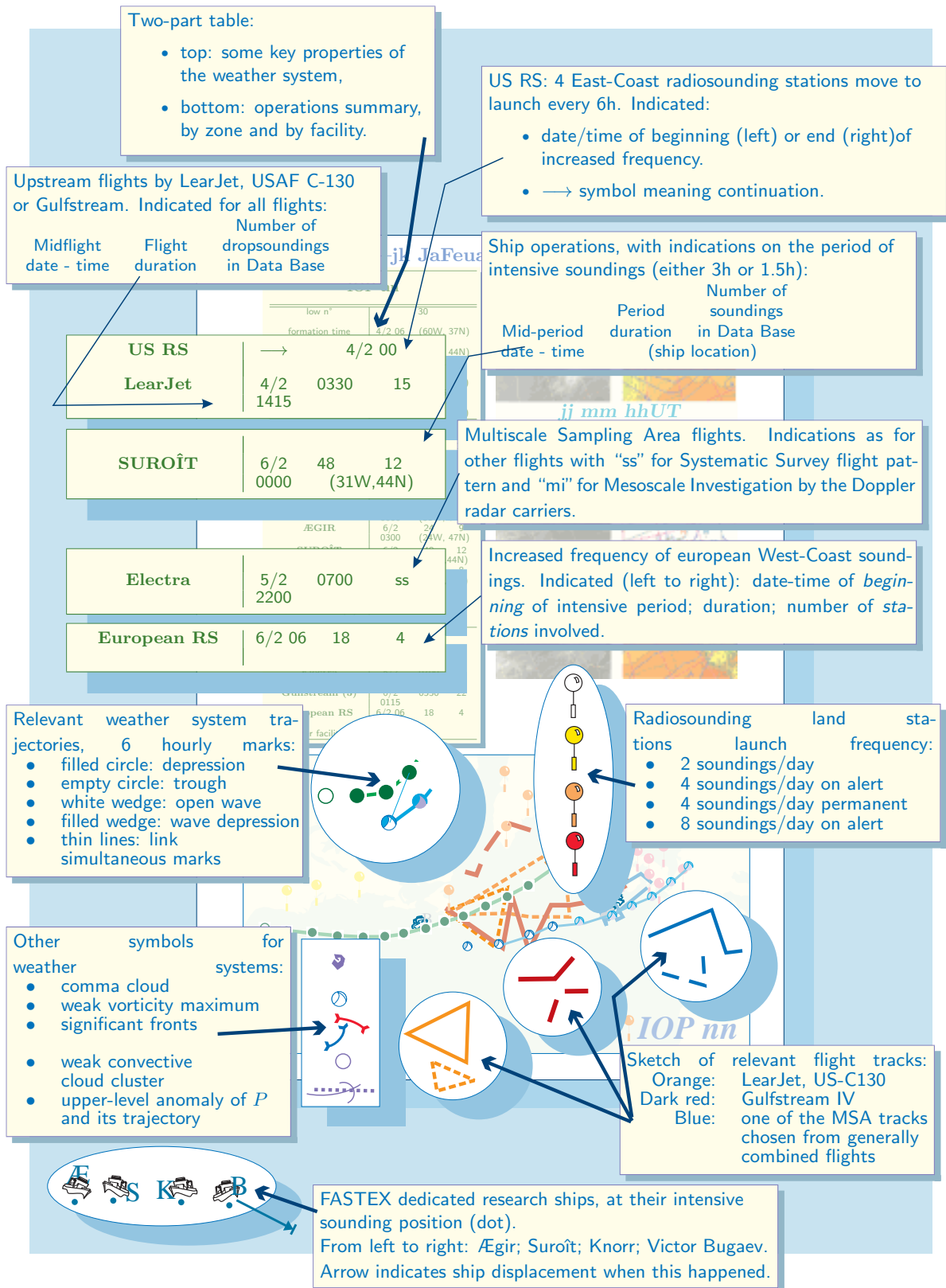
Table 3.1: The subjective synoptic characterization of the FASTEX cases is repeated at the beginning of this part to be used as a case selection table. On the screen version, the page numbers are hypertext links.

	Comma cloud- like feature	Second generation wave	Rapid development stage	Clear stage of baroclinic interaction	Suppressed waves (stable front)	See page
IOP 1	–	front	–	●	–	99
LOP 1	–	jet/front	–	–	–	100
IOP 2	●	front	–	–	slow gen	101
IOP 3	–	–	●	●	–	102
IOP 4	●	–	–	–	–	103
IOP 5	●	–	–	–	–	104
IOP 6	–	tempo	–	–	●	105
IOP 7	–	tempo	–	–	●	106
IOP 8	–	–	–	–	–	107
IOP 9	–	jet/front	–	●	–	108
IOP 10	–	front	–	–	–	109
IOP 11	–	–	●	●	–	110
LOP 2	–	front	–	●	–	111
IOP 12	–	jet/front	● ●	●	–	112
IOP 13	–	–	–	●	–	113
LOP 3	–	front	–	–	–	113
IOP 14	–	–	–	●	–	114
IOP 15	–	jet/front	●	●	–	115
IOP 16	–	jet/front	●	–	–	116
LOP 4	●	–	–	–	–	117
IOP 17	–	jet/front	●	●	–	118
LOP 5	–	front	●	–	–	119
IOP 18	●	–	●	●	–	120
LOP 6	–	fronts	–	–	–	121
IOP 19	–	front	●	●	tempo	122

Symbol ● means "yes" or "present"

An entry in column 2 means that the system started as a second generation wave. It gives an idea of its environment, "front" being obvious, "jet" meaning presence of a jet-streak or entrance, "tempo" meaning that waves existed temporarily or, in the case of IOP19, temporarily hindered.





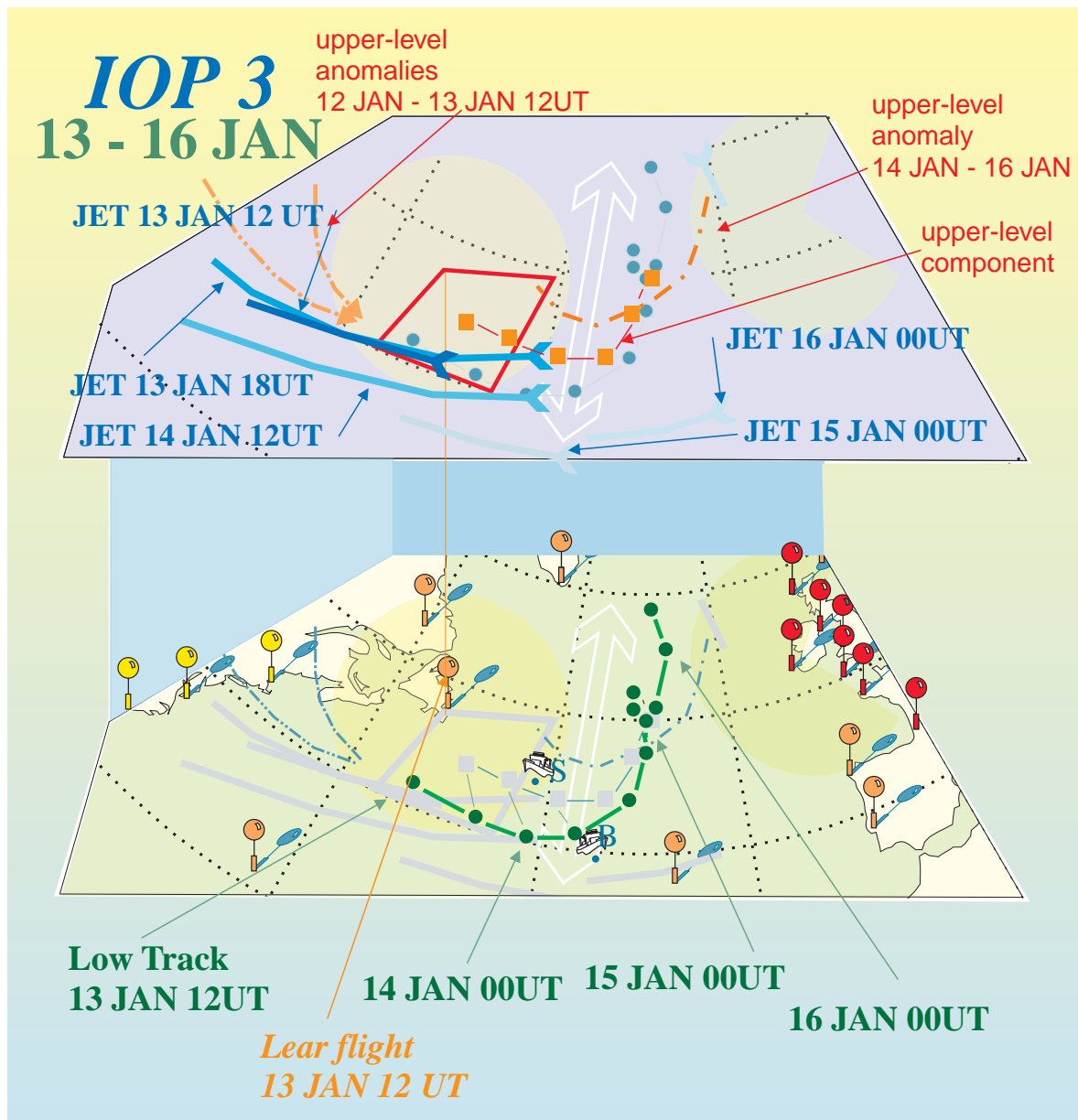
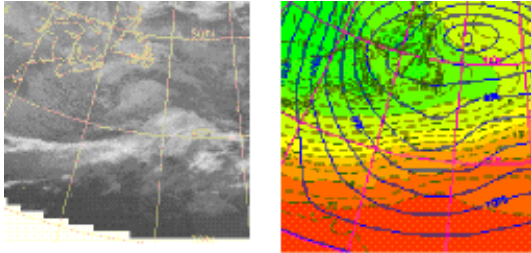


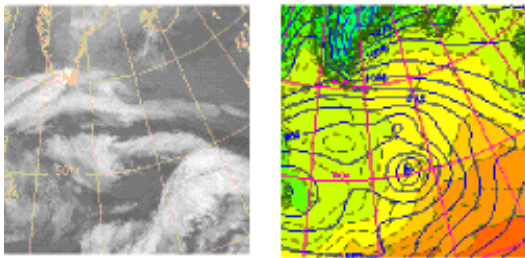
Figure 3.1: One early example of schematic summary for an IOP. This type of diagram attempts to provide a dynamical interpretation of the case together with where and when the observing facilities were employed.

3.2 IOP 1, 8–11 January

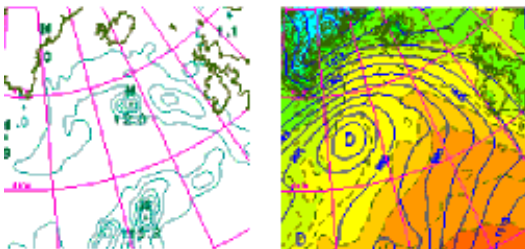
8 JAN 06UT



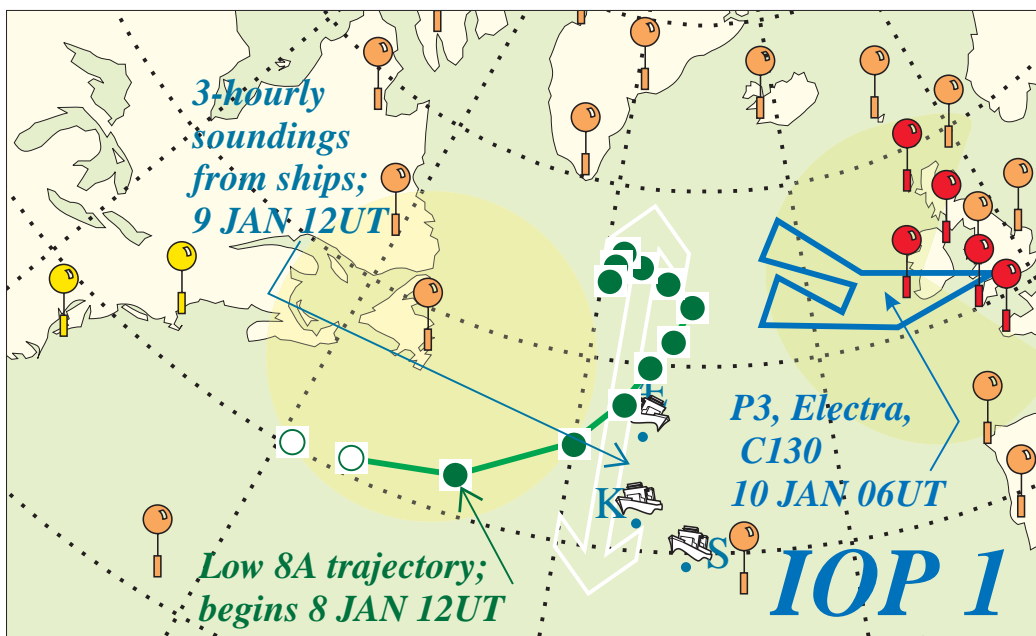
9 JAN 06UT



10 JAN 06UT



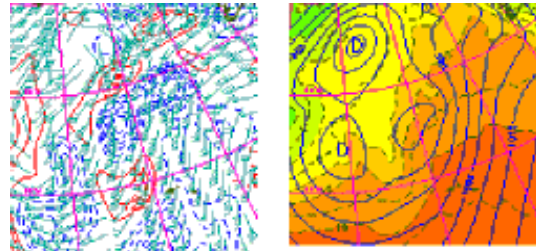
IOP 1		
	8A	low n°
8/1 06	(54W, 41N)	formation time
8/1 12	(47W, 42N) -9	max deepening rate (mbar/6h)
10/1 00	(33W, 54N) 968	max amplitude (mbar)
11/1 00	(40W, 55N)	end of tracking time
8/1 18	→	US RS
		LearJet
		C130 USAF
		Gulfstream (1)
9/1 1200	24 (35W, 42N)	KNORR
9/1 0900	18 (35W, 46N)	ÆGIR
9/1 1200	24 (31W, 39N)	SUROÏT
		V. BUGAEV
		Other ships
		Gulfstream (2)
10/1 0745	0730 21	C130
10/1 0630	0840	P3 NOAA
10/1 0600	0500 ss	Electra
		Gulfstream (3)
10/1 12	24 5	European RS
		Other facilities



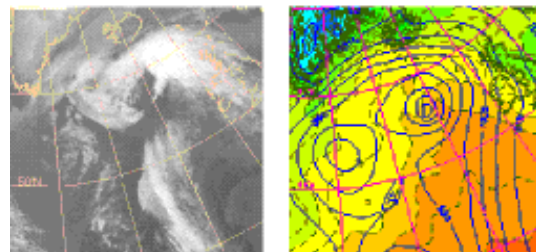
3.3 LOP 1, 10–12 January

LOP 1		
low n°	10	
formation time	10/1 00	(37W, 40N)
max deepening rate (mbar/6h)	11/1 00	(22W, 53N) -6
max amplitude (mbar)	11/1 12	(29W, 59N) 973
present in MSA	11/1 06	(20W, 56N)
end of tracking time	12/1 12	(1W, 68N)
Upstream data	US RS	
Ships	3 ships	4 s/d
	9/1	K, Æ, S
	10/1	
	Bugaev	8 s/d
	10/1	(35W, 38N)
Downstream data	Eur RS	→11/1 12

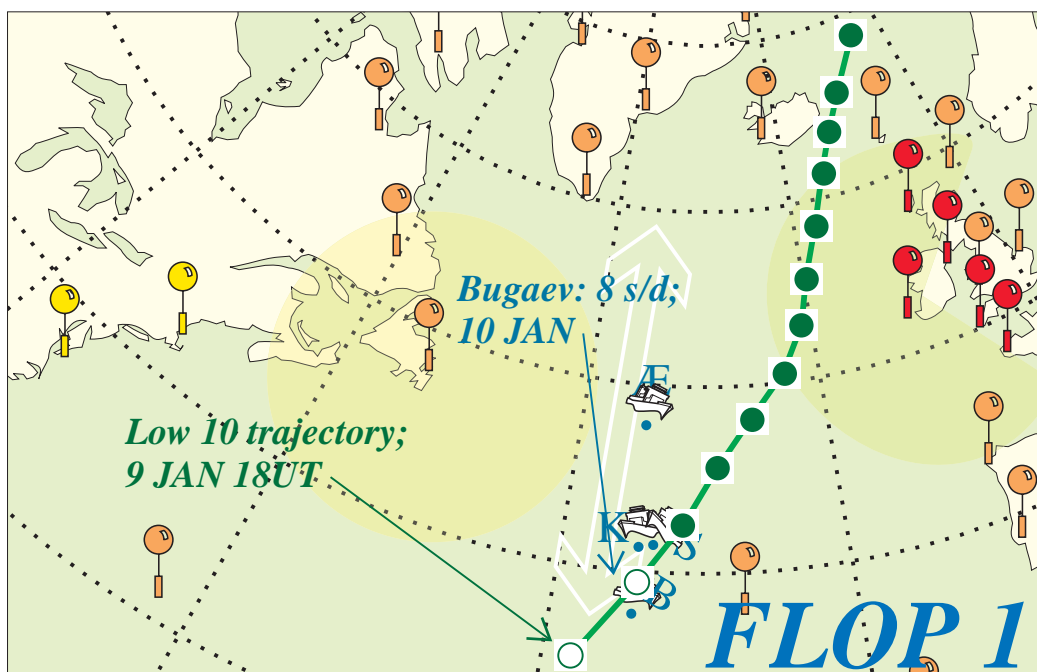
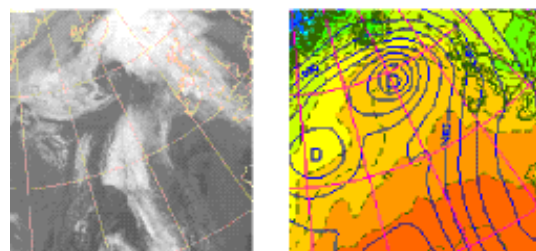
10 JAN 12UT



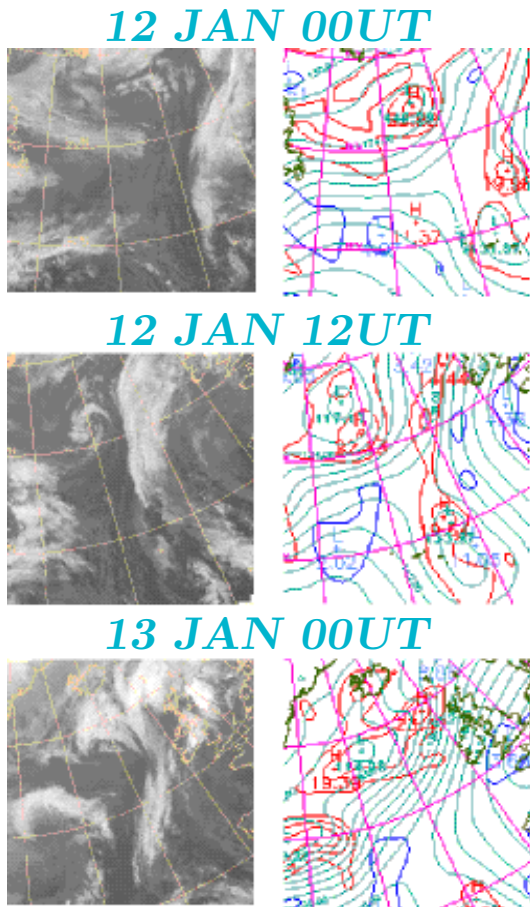
11 JAN 06UT



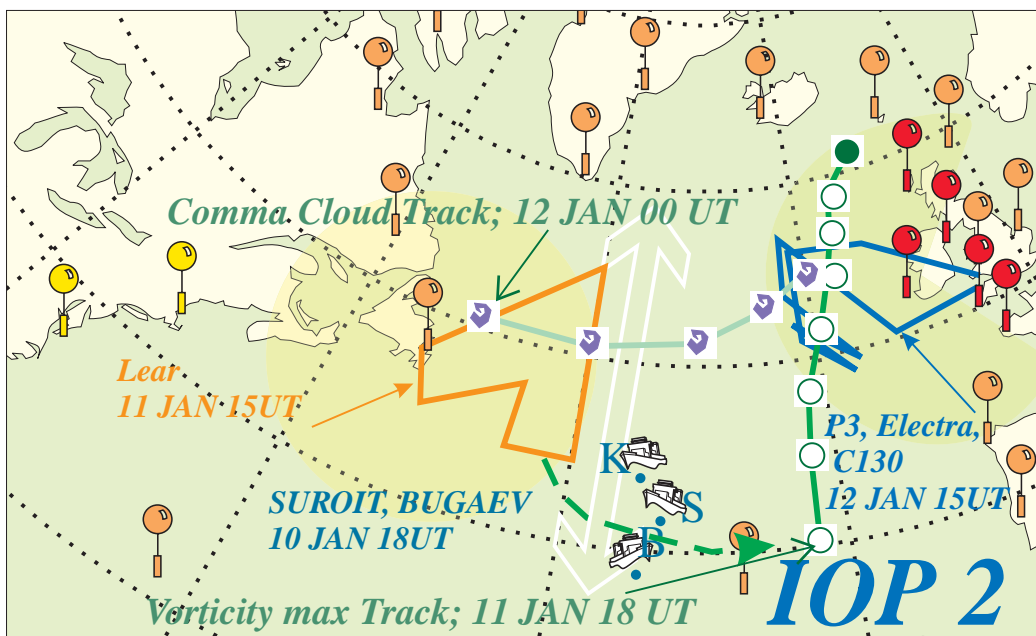
11 JAN 12UT



3.4 IOP 2, 11–13 January



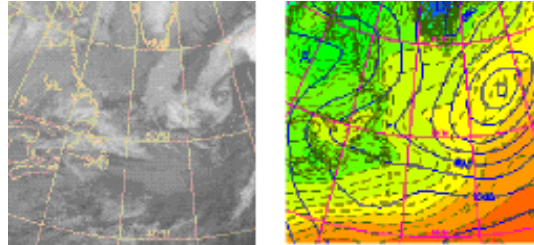
IOP 2		
	11	low n°
11/1 18	(23W, 40N)	formation time
13/1 00	(18W, 53N) -10	max deepening rate (mbar/6h)
13/1 00	(15W, 59N) tlw 978	max amplitude (mbar)
13/1 00	(15W, 59N)	end of tracking time
→ 12/1 18		US RS
11/1 1500	0345 11	LearJet C130 USAF Gulfstream (1)
10/1 2230	15 4 (35W, 42N)	KNORR ÆGIR
10/1 2230	15 4 (34W, 41N)	SUROÏT
10/1 1800	36 10 (35W, 38N)	V. BUGAEV
11/1 06-18	2 ASAP	Other ships Gulfstream (2)
12/1 1500	0945 42	C130
12/1 1615	0900	P3 NOAA
12/1 1615	0700	Electra Gulfstream (3)
12/1 12	24 5	European RS Other facilities



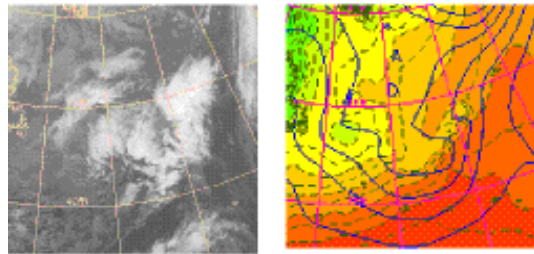
3.5 IOP 3, 13–16 January

IOP 3		
low n°	14	
formation time	13/1 12	(53W, 41N)
max deepening rate (mbar/6h)	14/1 12	(32W, 43N) -9
max amplitude (mbar)	15/1 18	(29W, 51N) 973
end of tracking time	16/1 06	(28W, 58N)
US RS	13/1 06	14/1 06
LearJet	13/1 1215	0430 14
C130 USAF		
Gulfstream (1)		
KNORR	14/1 2100	18 4 (35W, 45N)
ÆGIR	15/1 0300	18 6 (35W, 49N)
SUROÏT	14/1 0900	18 11 (41W, 46N)
V. BUGAEV	14/1 0900	18 13 (35W, 42N)
Other ships		
Gulfstream (2)		
C130		
P3 NOAA		
Electra		
Gulfstream (3)		
European RS	16/1 06	24 5
Other facilities		

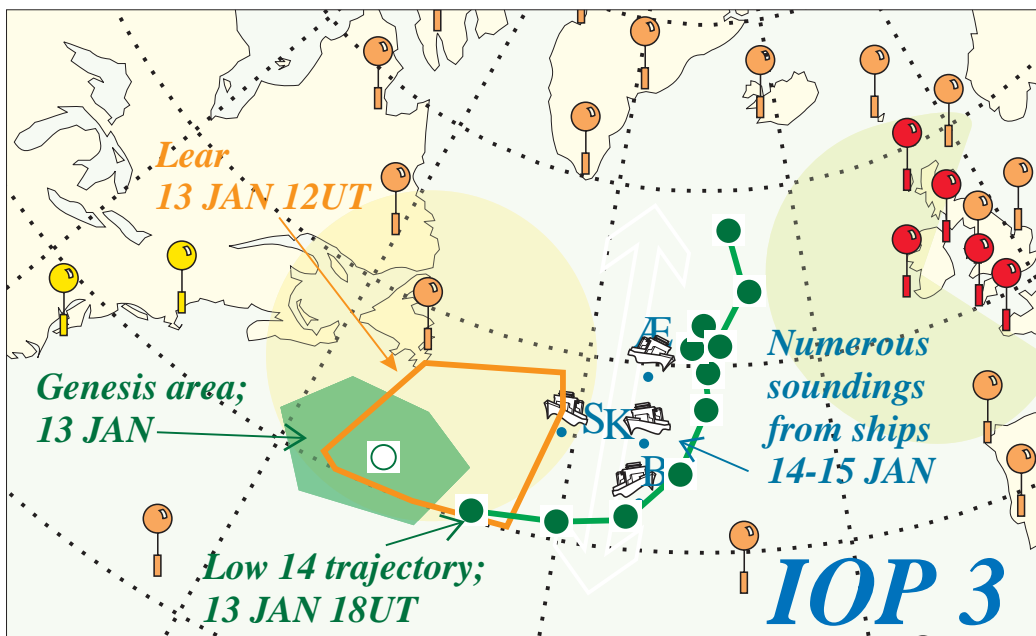
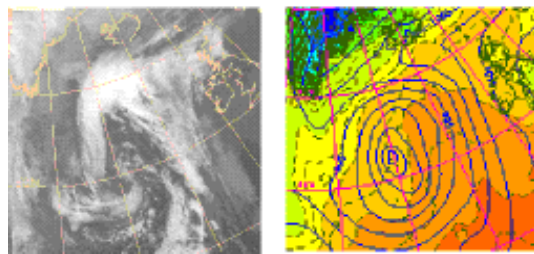
13 JAN 12UT



14 JAN 12UT

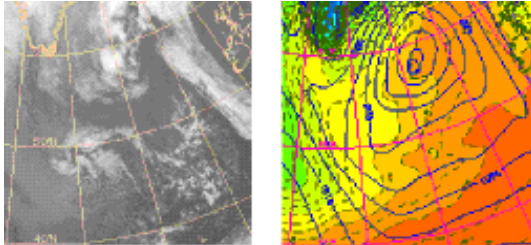


15 JAN 12UT

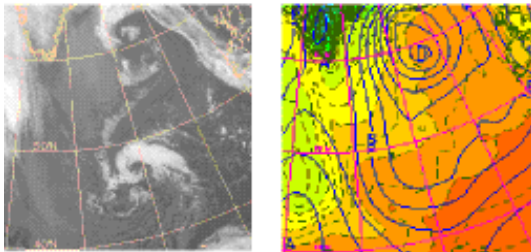


3.6 IOP 4, 16–18 January

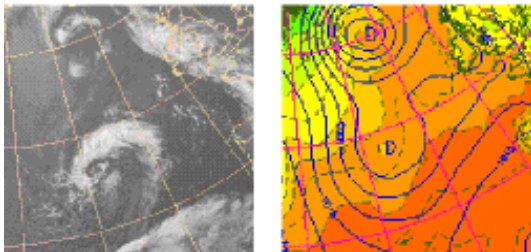
16 JAN 12UT



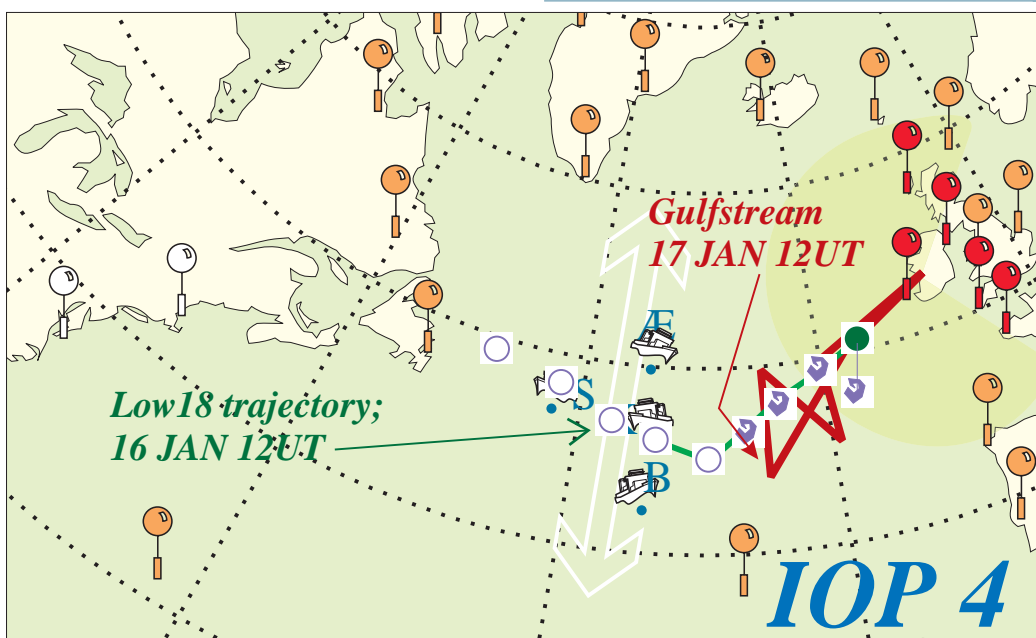
17 JAN 00UT



17 JAN 06UT



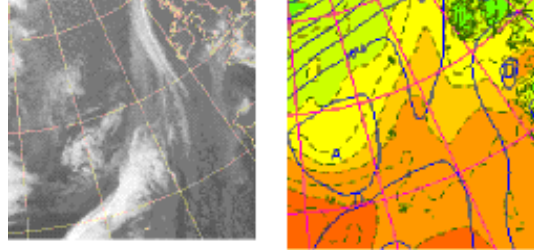
IOP 4		
	18	low n°
16/1 18	(33W, 47N)	formation time
17/1 06	(27W, 47N) -2	max deepening rate (mbar/6h)
17/1 12	(25W, 48N) 995	max amplitude (mbar)
18/1 06	(15W, 52N)	end of tracking time
US RS		
LearJet		
C130 USAF		
Gulfstream (1)		
16/1 18	2	KNORR
1500	(35W, 46N)	ÆGIR
16/1 18	11	SUROÏT
1500	(35W, 50N)	V. BUGAEV
16/1 18	11	Other ships
1500	(43W, 47N)	Gulfstream (2)
16/1 18	7	C130
1500	(35W, 42N)	P3 NOAA
		Electra
17/1 1215	0645 22	Gulfstream (3)
18/1 18	24 5	European RS
19/1 00	24 7	Other facilities



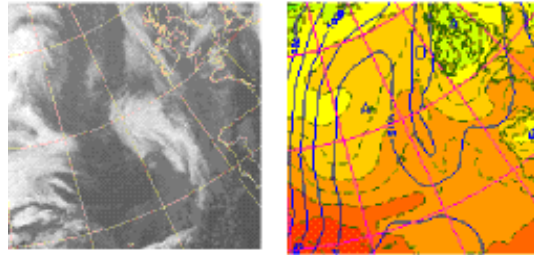
3.7 IOP 5, 22–23 February

IOP 5		
low n°	19 A/B	
formation time	22/1 00 (25W, 47N)	
max deepening rate (mbar/6h)	no significant pressure fall	
max amplitude (mbar)	22/1 18 (17W, 44N) 1008	
end of tracking time	23/1 06 scission	
US RS	19/1 18	20/1 18
LearJet	20/1 1130	0445 14
C130 USAF		
Gulfstream (1)		
KNORR	20/1 2100	18 0 (48W, 45N)
ÆGIR	22/1 0000	48 10 (35W, 52N)
SUROÏT	20/1 2100	18 11 (35W, 47N)
V. BUGAEV	21/1 0600	24 7 (35W, 45N)
Other ships		
Gulfstream (2)		
C130	22/1 0915	0430 ~0
P3 NOAA	22/1 1345	0930
Electra	22/1 1200	0600 ss
Gulfstream (3)	22/1 1215	0315 0
European RS	22/1 15	24 7
Other facilities		

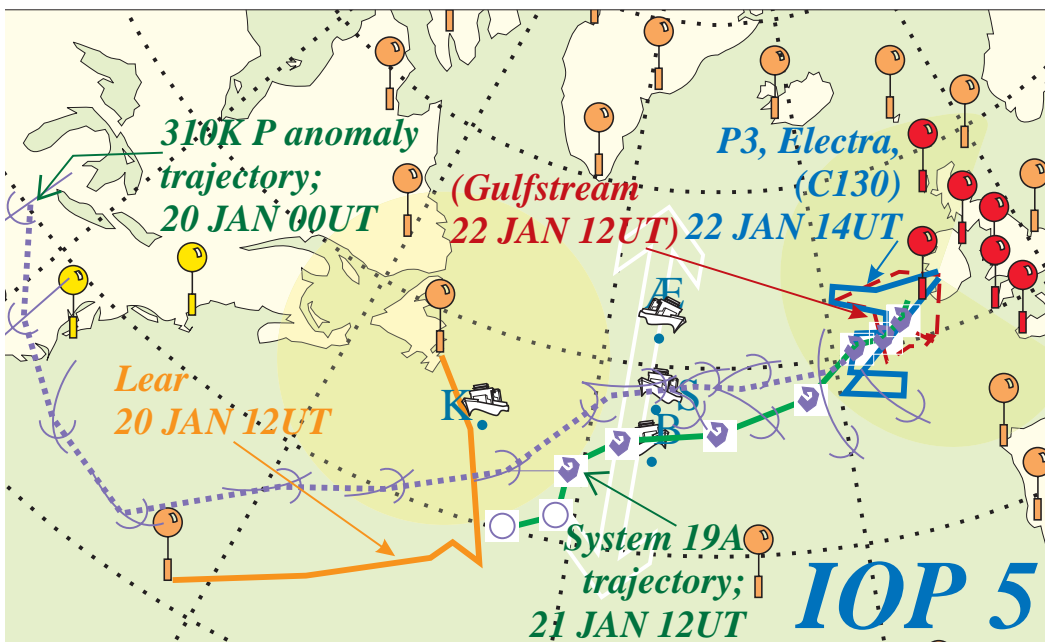
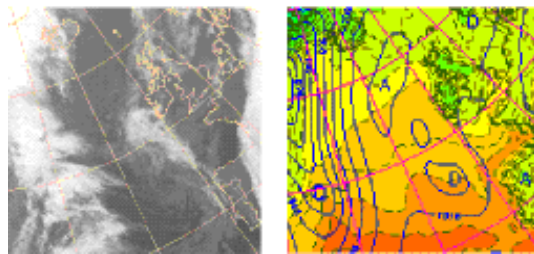
22 JAN 00UT



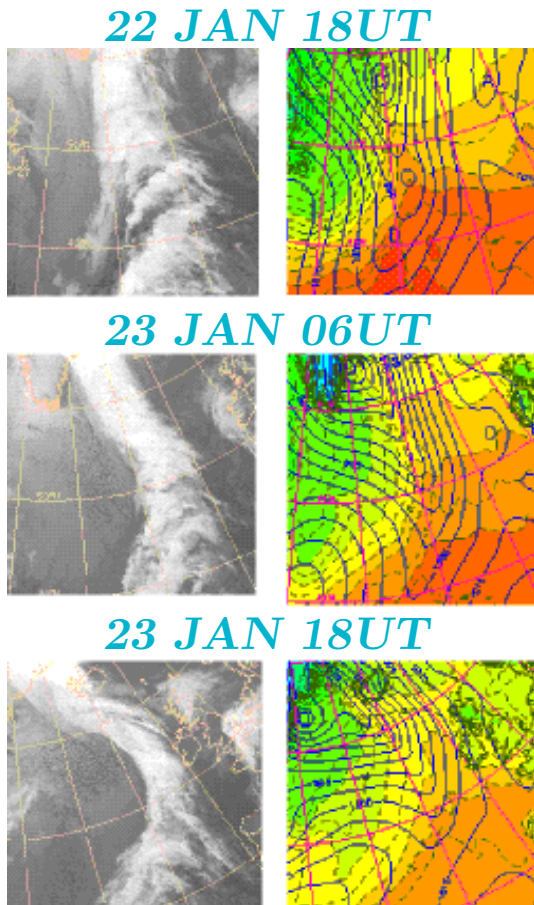
22 JAN 12UT



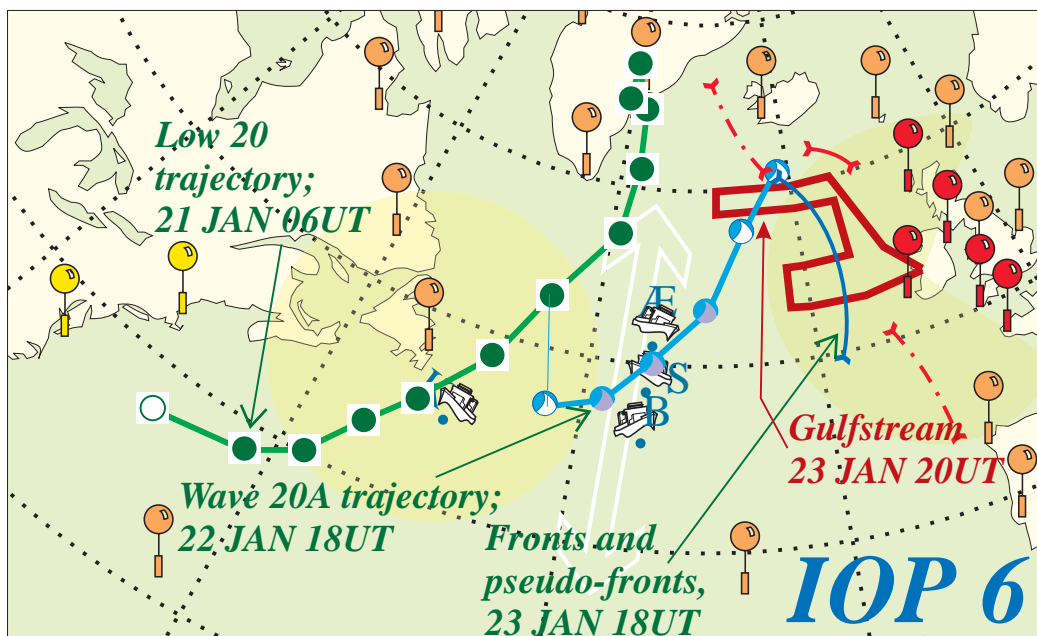
23 JAN 00UT



3.8 IOP 6, 22–23 January



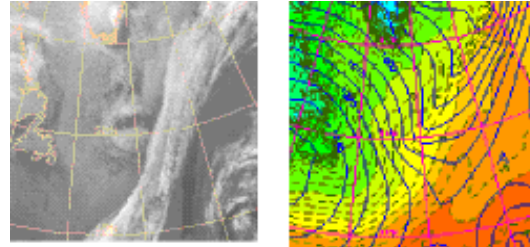
IOP 6		
	20	low n°
22/1 12	(43W, 46N)	formation time
23/1 00	(35W, 50N) -4	max deepening rate (mbar/6h)
23/1 00	(35W, 50N) 984	max amplitude (mbar)
23/1 12	(25W, 57N)	end of tracking time
22/1 18		US RS
		LearJet
		C130 USAF
		Gulfstream (1)
22/1 1200	24 4 (49W, 45N)	KNORR
23/1 0300	24 6 (35W, 51N)	ÆGIR
23/1 0300	24 7 (35W, 49N)	SUROÏT
23/1 0300	24 10 (35W, 45N)	V. BUGAEV
23/1	1 ASAP	Other ships
		Gulfstream (2)
		C130
		P3 NOAA
		Electra
23/1 1945	0745 16	Gulfstream (3)
24/1 03	24 6	European RS
		Other facilities



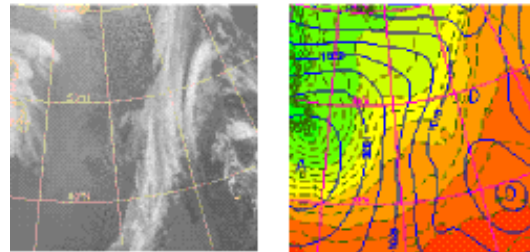
3.9 IOP 7, 25–26 January

IOP 7		
low n°	22 A/B	
formation time	25/1 12	(27W, 50N)
max deepening rate (mbar/6h)	25/1 06	(32W, 47N) < 1
max amplitude (mbar)	26/1 00	(18W, 55N) tlw 1012
end of tracking time	26/1 12	(15W, 55N)
US RS		
LearJet		
C130 USAF		
Gulfstream (1)		
KNORR		
ÆGIR	25/1 0600	24 (35W, 49N) 9
SUROÏT	25/1 0600	24 (35W, 52N) 8
V. BUGAEV	25/1 0600	24 (35W, 45N) 8
Other ships		
Gulfstream (2)	25/1 2015	0630 21
C130	26/1 0030	0700 32
P3 NOAA	26/1 0100	0800
Electra	26/1 0245	0600 ip
Gulfstream (3)		
European RS	26/1 00	12 4
Other facilities		

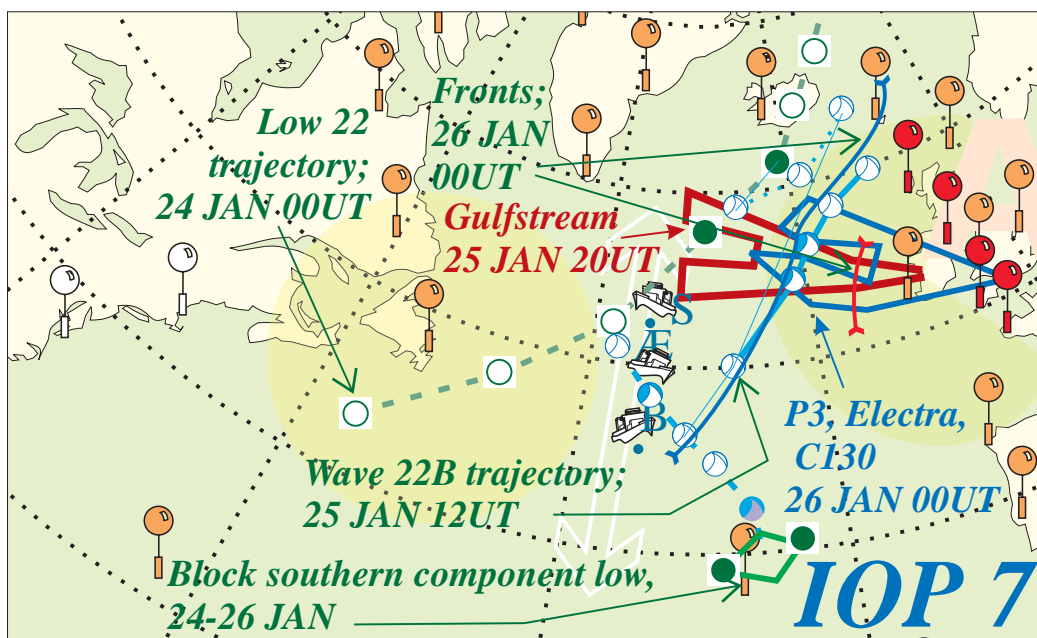
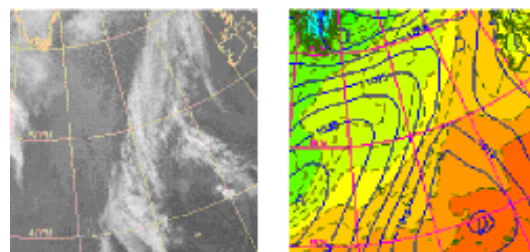
25 JAN 00UT



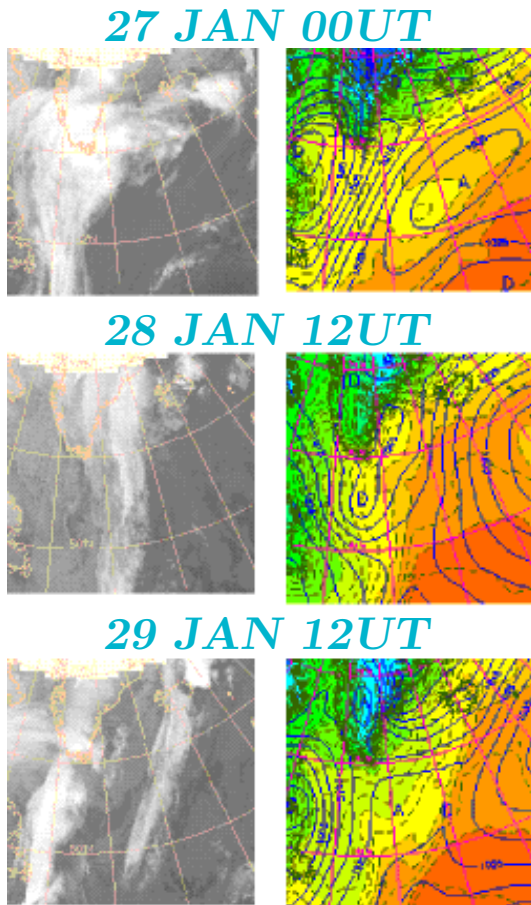
25 JAN 12UT



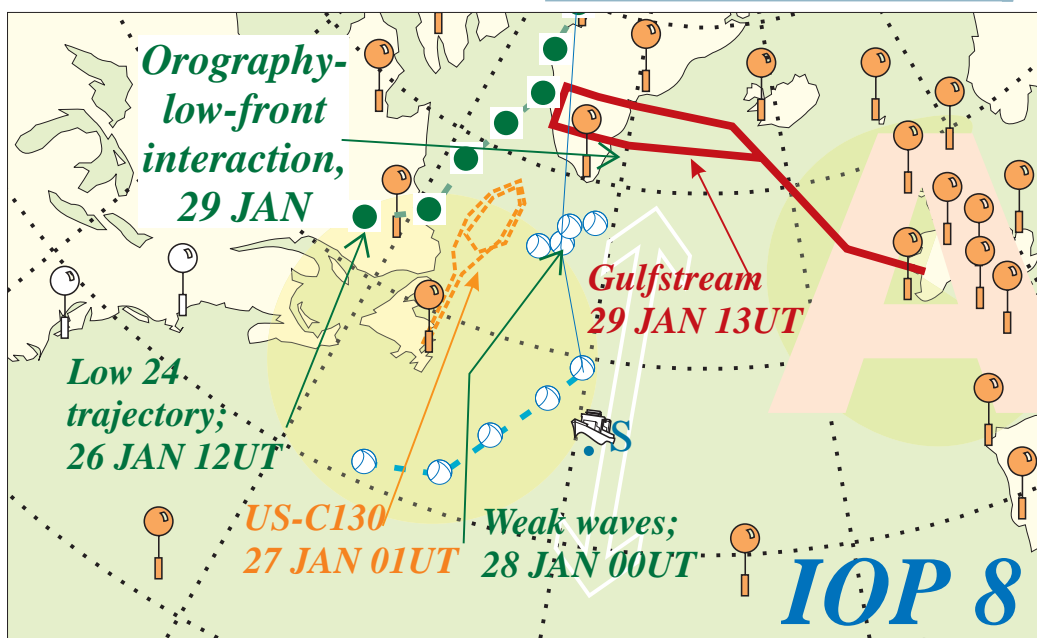
26 JAN 00UT



3.10 IOP 8, 27–29 January



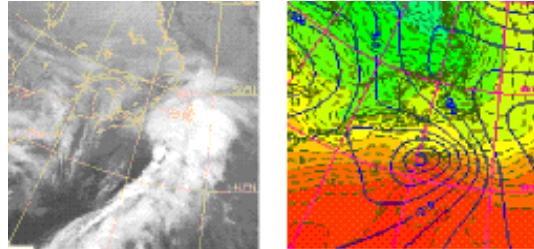
IOP 8		
Greeland Waves		low n°
Complex interaction low(s)/orography		formation time
		max deepening rate (mbar/6h)
		max amplitude (mbar)
		end of tracking time
US RS		
LearJet		
27/1	0600	14
0100		
C130 USAF		
Gulfstream (1)		
KNORR		
ÆGIR		
29/1		5
	(39W,45N)	
SUROÏT		
V. BUGAEV		
Other ships		
29/1	0715	13
1230		
C130		
P3 NOAA		
Electra		
Gulfstream (3)		
European RS		
Other facilities		



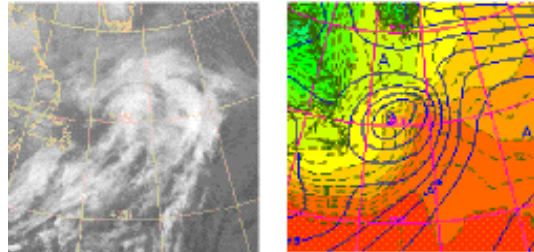
3.11 IOP 9, 30 January–3 February

IOP 9			
low n°	27		
formation time	30/1 12	(78W, 31N)	
max deepening rate (mbar/6h)	31/1 12	(66W, 37N) -7	
max amplitude (mbar)	3/2 06	(18W, 63N) 975	
end of tracking time	3/2 18	(2W, 68N)	
US RS	31/1 06 →		
LearJet	1/2 0000	0330	10
C130 USAF			
Gulfstream (1)	1/2 1145	0530	26 Sh →StJ
KNORR			
ÆGIR			
SUROÏT			
V. BUGAEV	2/2	24	3 (56W, 44N)
Other ships			
Gulfstream (2)			
C130			
P3 NOAA	2/2 2000	0900	7 ss
Electra	2/2 2300	0700	ip
Gulfstream (3)			
European RS	3/2 03	18	5
Other facilities	Norssarsuaq 1/2 18 8		

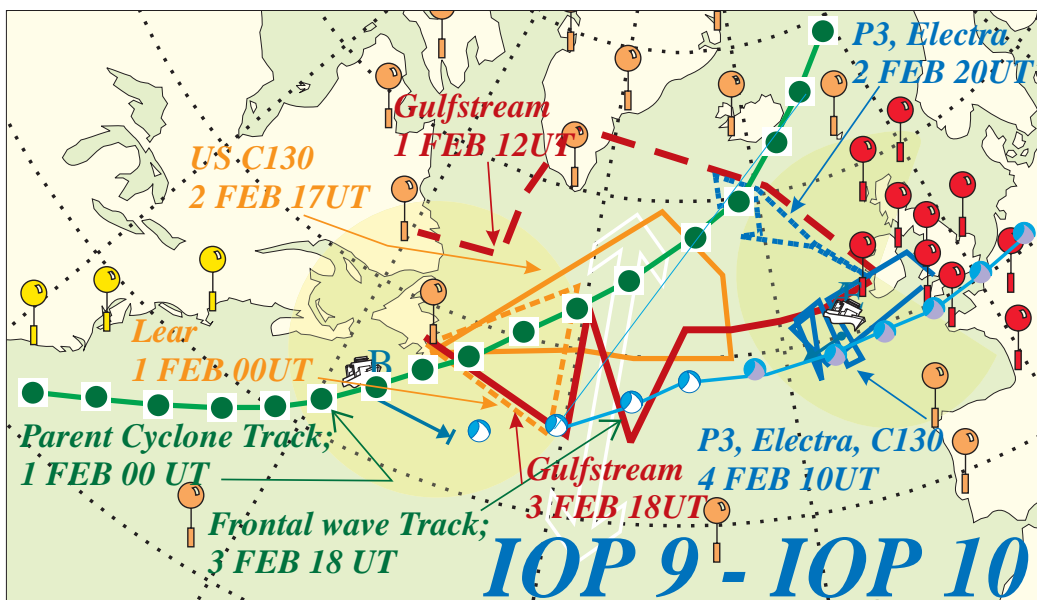
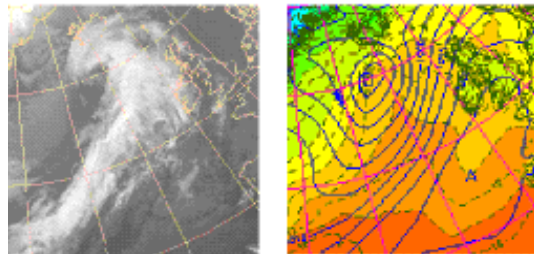
1 FEB 00UT



2 FEB 00UT

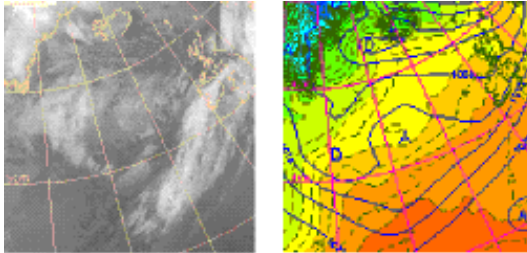


3 FEB 00UT

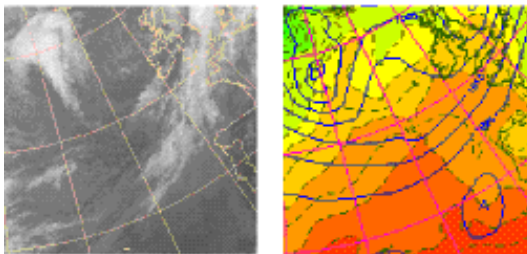


3.12 IOP 10, 3–5 February

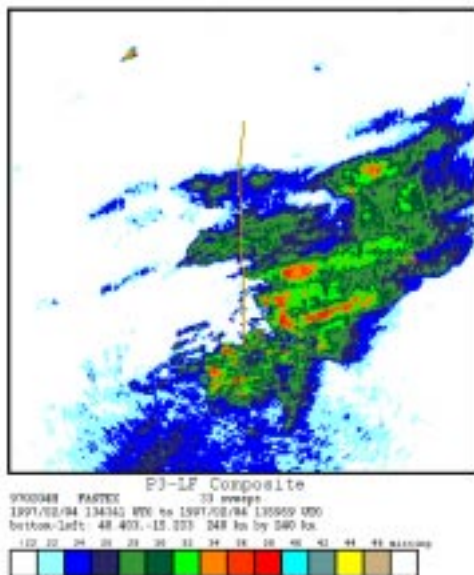
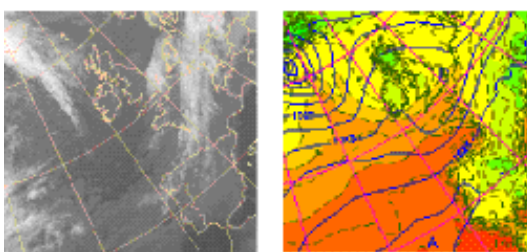
4 FEB 00UT



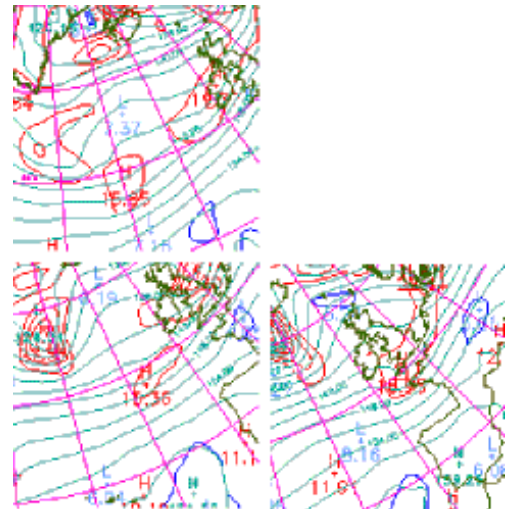
4 FEB 12UT



5 FEB 00UT



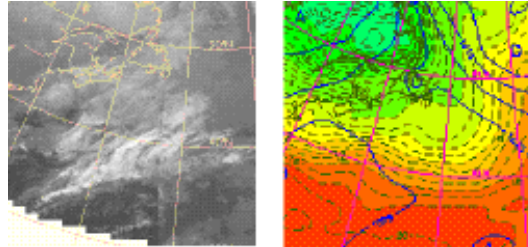
IOP 10		
	28	low n°
3/2 12	(40W, 45N)	formation time
4/2 12	(17W, 48N) -3	max deepening rate (mbar/6h)
4/2 18	(10W, 50N) 1010	max amplitude (mbar)
5/2 12	(5E, 50N)	end of tracking time
→	→	US RS
		LearJet
2/2 1700	1045 19	C130 USAF
		Gulfstream (1)
		KNORR
4/2 1200	24 10 (12W, 50N)	ÆGIR
		SUROÍT
3/2 0600	24 7 (50W, 43N)	V. BUGAEV
		Other ships
3/2 1815	0545 32 StJ →Sh	Gulfstream (2)
4/2 0930	0900 16	C130
4/2 1030	0915 1	P3 NOAA
4/2 0915	0730 ss	Electra
		Gulfstream (3)
4/2 03	24 12	European RS
	2 ARAT flights 4/2	Other facilities



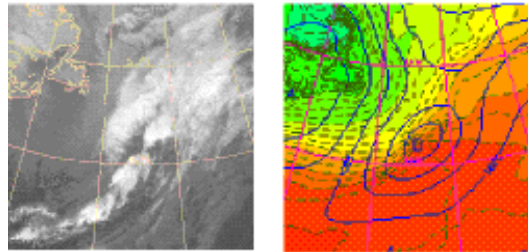
3.13 IOP 11, 4–7 February

IOP 11			
low n°	30		
formation time	4/2 06	(60W, 37N)	
max deepening rate (mbar/6h)	5/2 06	(39W, 44N) -13	
max amplitude (mbar)	7/2 00	(5W, 68N) 950	
end of tracking time	7/2 00	(5W, 68N)	
US RS	→	4/2 00	
LearJet	4/2 0330	15	
	1415		
C130 USAF	4/2 0945	13	
	1615		
Gulfstream (1)			
KNORR	6/2 0000	48	15
		(51W, 51N)	
ÆGIR	6/2 0300	24	9
		(24W, 47N)	
SUROÏT	6/2 0000	48	12
		(31W,44N)	
V. BUGAEV	5/2 0000	48	8
		(35W,41N)	
Other ships			
Gulfstream (2)			
C130	5/2 2300	1000	38
	6/2 0145	1000	
P3 NOAA	6/2 0145	1000	
	0145		
Electra	5/2 2200	0700	ss
	2200		
Gulfstream (3)	6/2 0115	0530	22
	0115		
European RS	6/2 06	18	4
Other facilities			

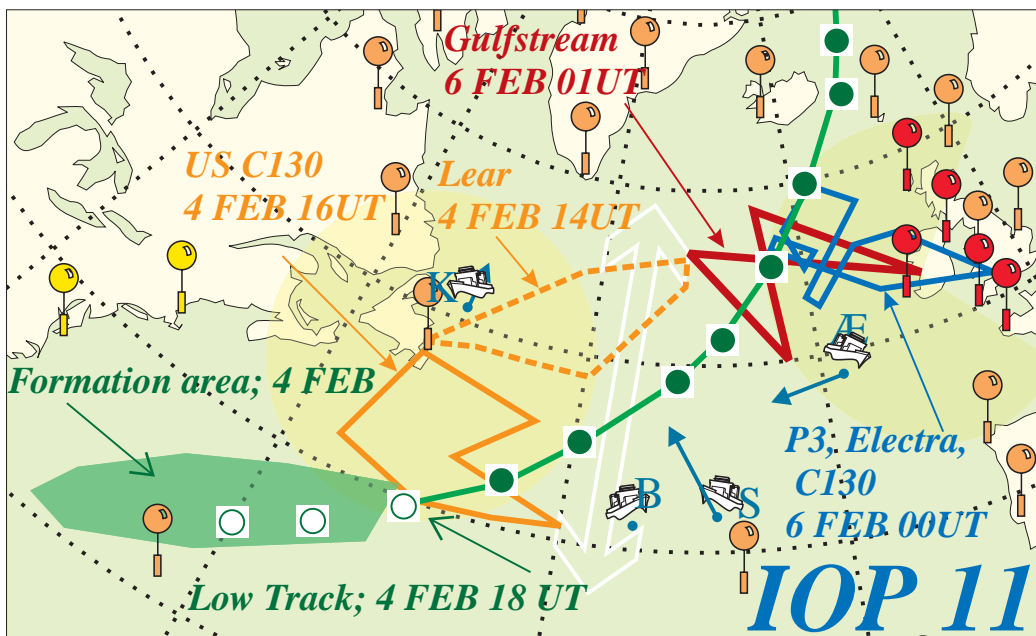
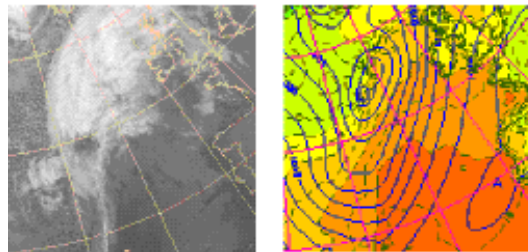
4 FEB 00UT



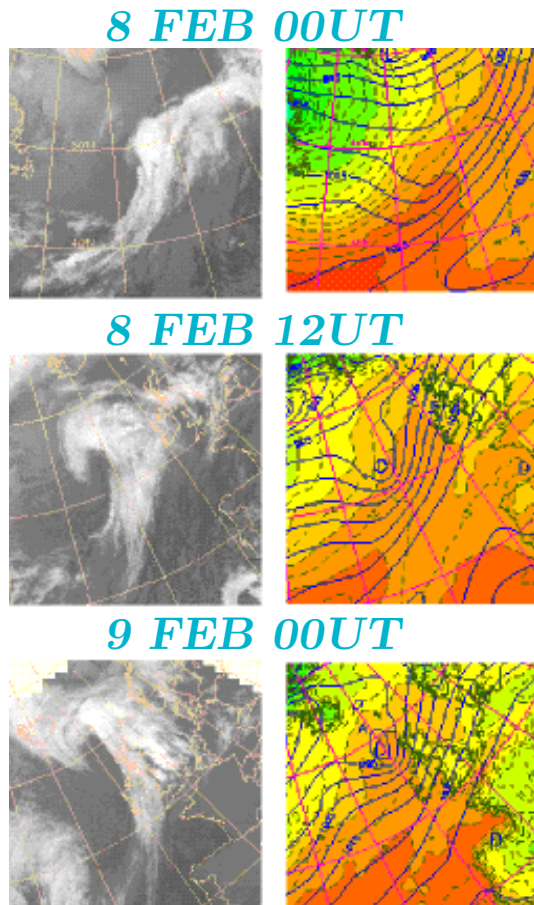
5 FEB 00UT



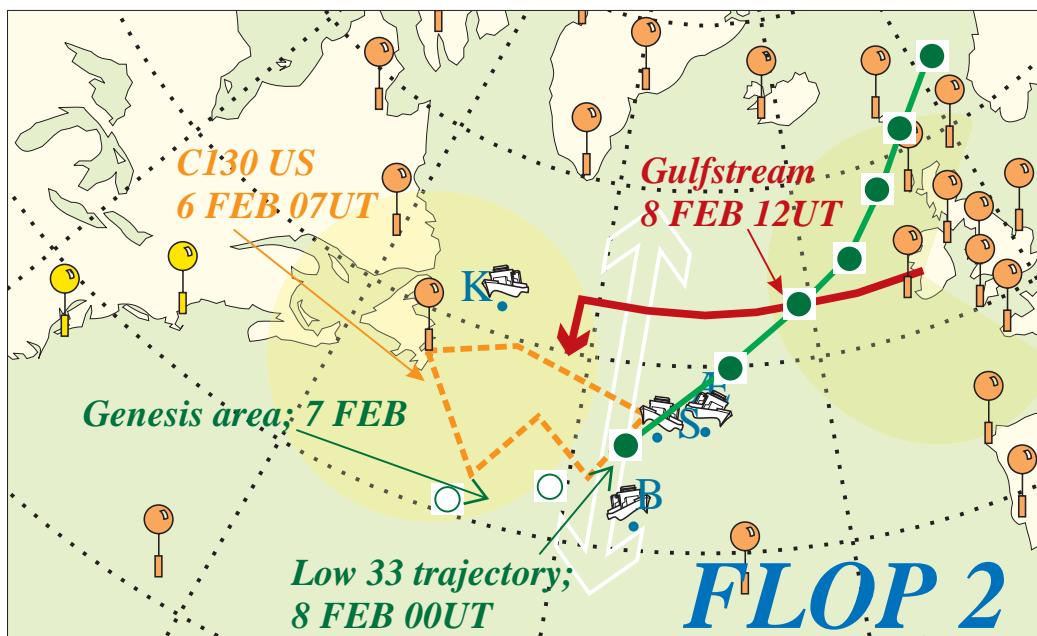
6 FEB 00UT



3.14 LOP 2, 7–9 February



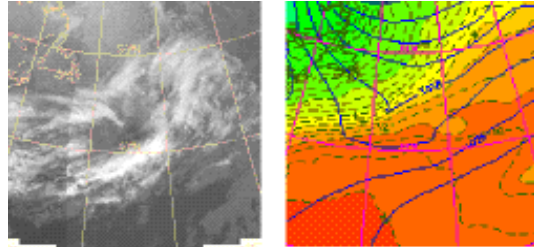
LOP 2		
33		low n°
7/2 00	(52W, 40N)	formation time
8/2 06	(29W, 50N) -9	max deepening rate (mbar/6h)
9/2 06	(5W, 64N) 985	max amplitude (mbar)
8/2 18	(15W, 55N)	present in MSA
9/2 12	(2E, 64N)	end of tracking time
C130 US		Upstream data
5/2	1030 18	
1300		
C130 US		
6/2	1000 15	
0730		
Knorr	8 s/d	Ships
7/2	(49W, 51N)	
Ægir	8 s/d	
7/2	(30W, 47N)	
Suroît	7 s/d	
8/2	(33W, 47N)	
Bugaev	8 s/d	
	(35W, 41N)	
Gulfstream		Downstream data
8/2	0530	
1215	en route	



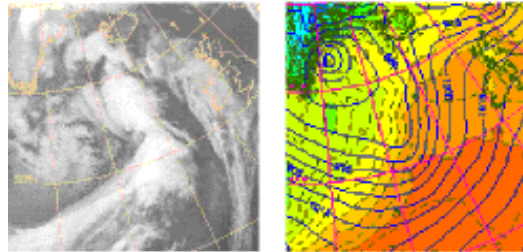
3.15 IOP 12, 9–11 February

IOP 12		
low n°	34	
formation time	9/2 06	(35W, 48N)
max deepening rate (mbar/6h)	9/2 12	(27W, 52N) -22
max amplitude (mbar)	10/2 06	(20W, 62N) 947
end of tracking time	11/2 00	(30W, 65N)
US RS	8/2 06 →	
LearJet	8/2 1100	8 (NB:C130)
C130 USAF	9/2 0730	7
Gulfstream (1)	8/2 0530	26
	1215	Sh →StJ
KNORR	9/2 1200	24 7 (51W, 56N)
ÆGIR	9/2 1500	24 11 (35W, 46N)
SUROÏT	9/2 1500	24 9 (35W, 50N)
V. BUGAEV	9/2 1500	24 14 (35W, 41N)
Other ships	9/2	1 ASAP
Gulfstream (2)	retour StJ →Sh	
C130	9/2 1745	1130 21
P3 NOAA	9/2 1800	1000 ss
Electra		
Gulfstream (3)		
European RS	10/2 09	24 8
Other facilities		

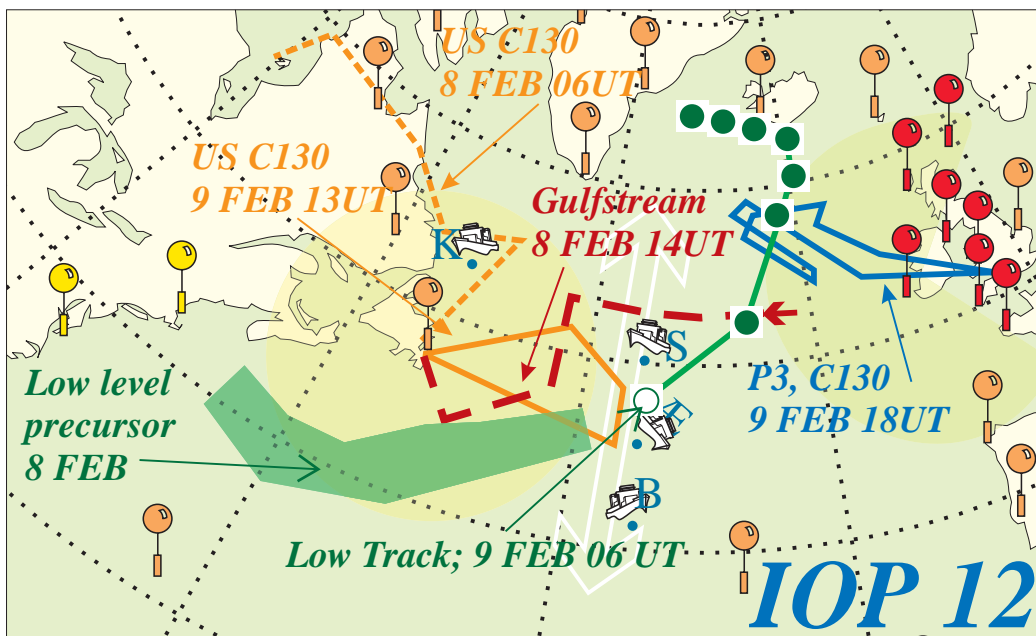
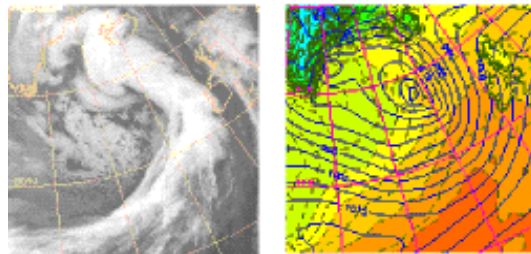
8 FEB 18UT



9 FEB 12UT

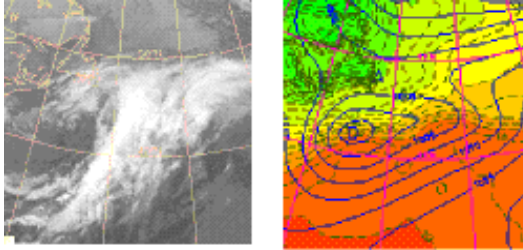


9 FEB 18UT

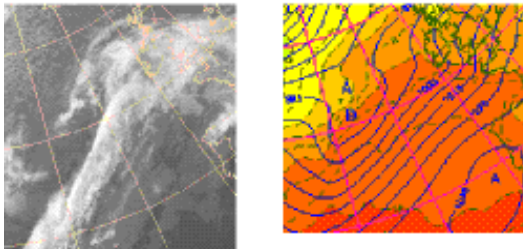


3.16 IOP 13/LOP 3, 8–13 February

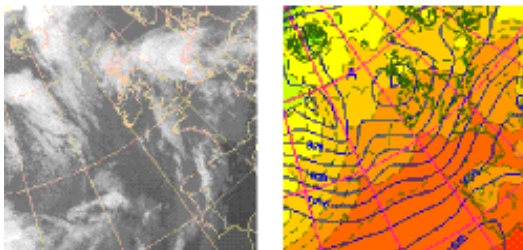
10 FEB 06UT



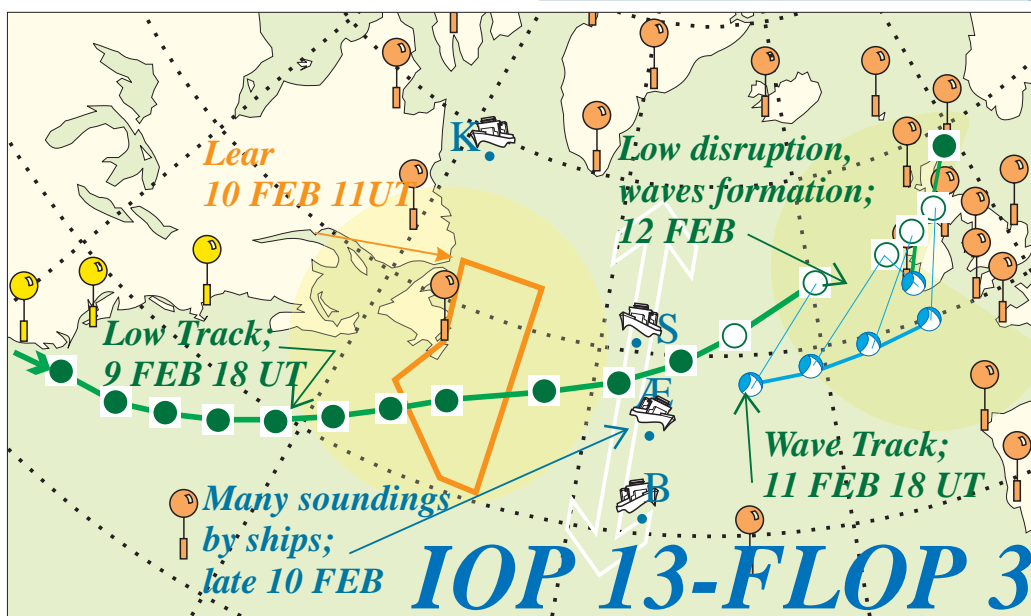
11 FEB 12UT



12 FEB 12UT



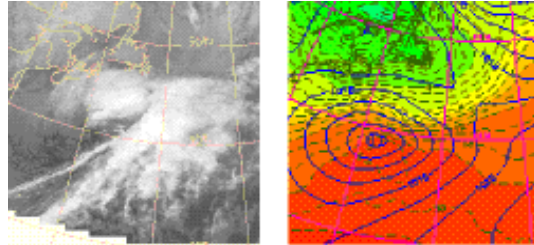
IOP 13/LOP 3		
35/35A		low n°
8/2 06	(85W, 32N)	formation time
9/2 18	(62W, 39N) -6	max deepening rate (mbar/6h)
10/2 18	(43W, 46N) 989	max amplitude (mbar)
13/2 00	(2W, 59N)	end of tracking time
→ 9/2 18		US RS
10/2 0500	18	LearJet
1100		C130 USAF
		Gulfstream (1)
10/2 1200	24 6 (54W, 57N)	KNORR
10/2 2100	18 12 (35W, 46N)	ÆGIR
10/2 2100	24 18 (35W, 52N)	SUROÏT
10/2 2100	18 15 (35W, 41N)	V. BUGAEV
		Other ships
		Gulfstream (2)
		C130
		P3 NOAA
		Electra
		Gulfstream (3)
		European RS
		Other facilities



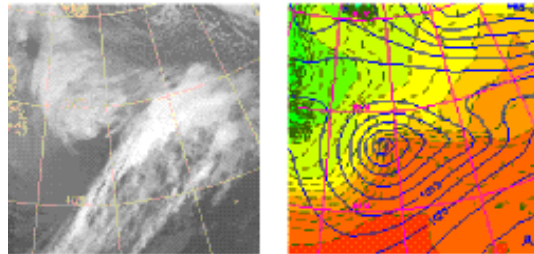
3.17 IOP 14, 10–15 February

IOP 14		
low n°	37	
formation time	10/2 18	(77W, 28N)
max deepening rate (mbar/6h)	11/2 18	(65W, 37N) -9
max amplitude (mbar)	12/2 18	(45W, 43N) 986
end of tracking time	15/2 00	(3W, 48N)
US RS	11/2 06	12/2 06
LearJet	12/2 1030	0415 20
C130 USAF		
Gulfstream (1)		
KNORR		
ÆGIR	13/2 0000	18 6 (35W, 46N)
SUROÏT	13/2 0000	18 7 (38W,50N)
V. BUGAEV	13/2 0000	18 9 (35W,41N)
Other ships	13/2 06	1 ASAP
Gulfstream (2)		
C130		
P3 NOAA		
Electra		
Gulfstream (3)		
European RS		
Other facilities		

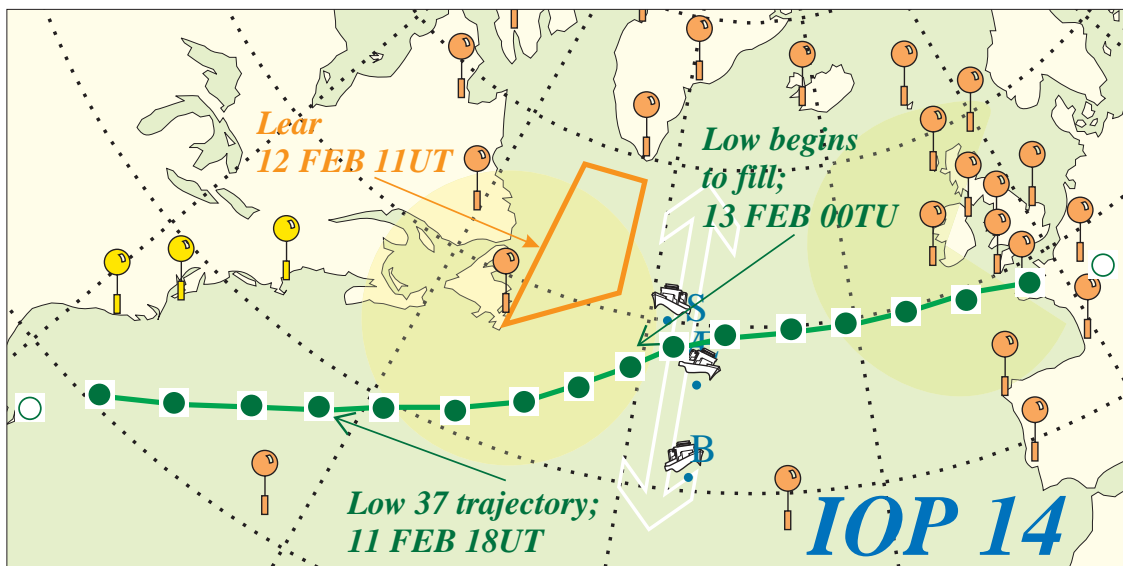
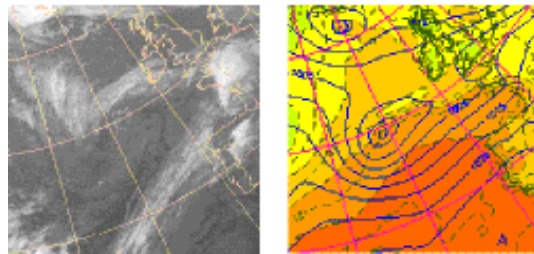
12 FEB 00UT



13 FEB 00UT

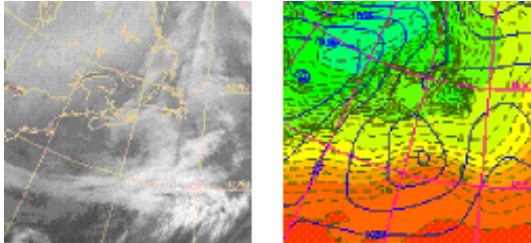


14 FEB 00UT

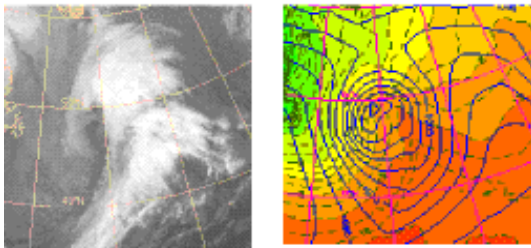


3.18 IOP 15, 13–17 February

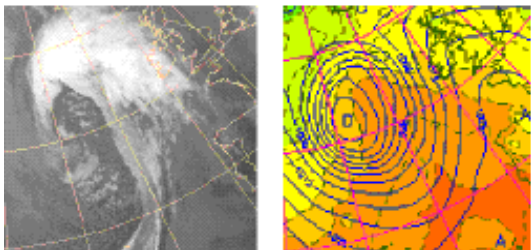
13 FEB 12UT



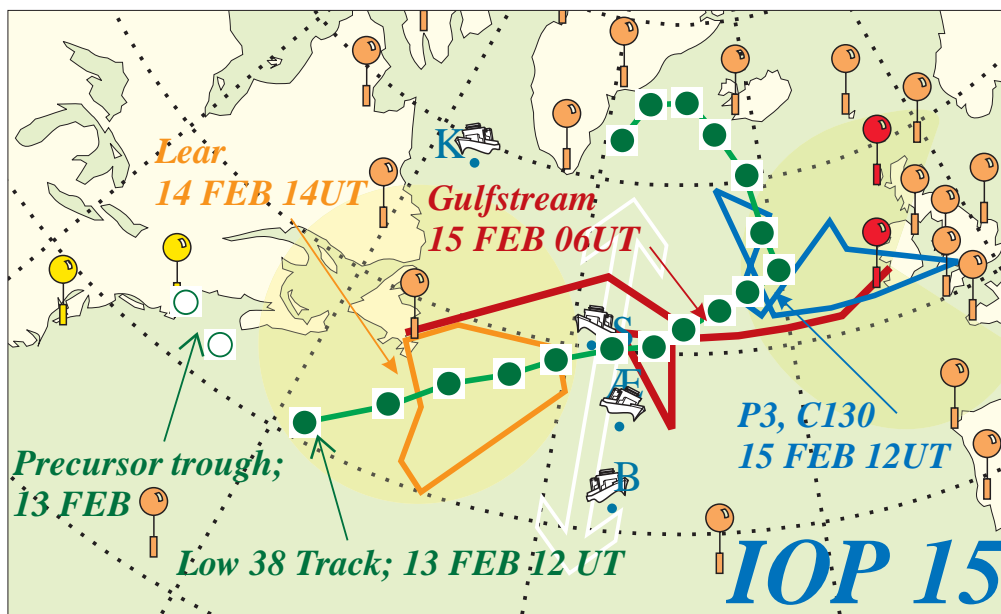
14 FEB 12UT



15 FEB 12UT



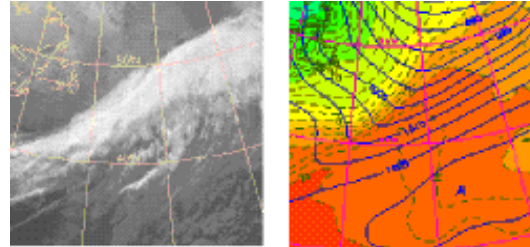
IOP 15		
	38	low n°
13/2 12	(58W, 42N)	formation time
14/2 00	(50W, 46N) -10	max deepening rate (mbar/6h)
15/2 18	(24W, 53N) 973	max amplitude (mbar)
17/2 18	(38W, 63N)	end of tracking time
13/2 06	14/2 00	US RS
14/2 1330	0400 16	LearJet
		C130 USAF
13/2 1430	0500 0	Gulfstream (1)
	Sh →StJ	
13/2 1500	24 8	KNORR
14/2 1800	(55W, 59N) 24 7	ÆGIR
14/2 1800	(35W, 46N) 24 6	SUROÏT
14/2 1800	(39W, 50N) 24 7	V. BUGAEV
15/2 06	1 ASAP	Other ships
15/2 0615	0630 28	Gulfstream (2)
	StJ →Sh	
15/2 1130	1100 19	C130
15/2 1145	0830	P3 NOAA
		Electra
		Gulfstream (3)
16/2 15	9 2	European RS
		Other facilities



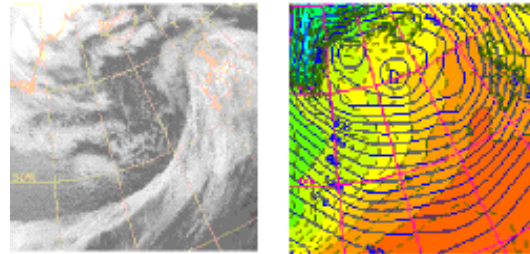
3.19 IOP 16, 17–18 February

IOP 16			
low n°	39A		
formation time	17/2 00	(37W, 49N)	
max deepening rate (mbar/6h)	17/2 06	(25W, 52N) -20	
max amplitude (mbar)	18/2 06	(12W, 68N) 943	
end of tracking time	18/2 06	(12W, 68N)	
US RS	15/2 12	→	
LearJet	16/2 1345	0830	21
C130 USAF			
Gulfstream (1)	(17/2)	(06)	Sh →StJ
KNORR	16/2 1200	24	8 (53W, 61N)
ÆGIR	16/2 2230	15	6 (35W, 52N)
SUROÏT	16/2 2230	15	5 (38W, 48N)
V. BUGAEV	16/2 2230	15	6 (35W, 41N)
Other ships			
Gulfstream (2)			
C130	17/2 0730	1100	26
P3 NOAA	17/2 0700	0645	
Electra			
Gulfstream (3)			
European RS	17/2 18	24	10
Other facilities			

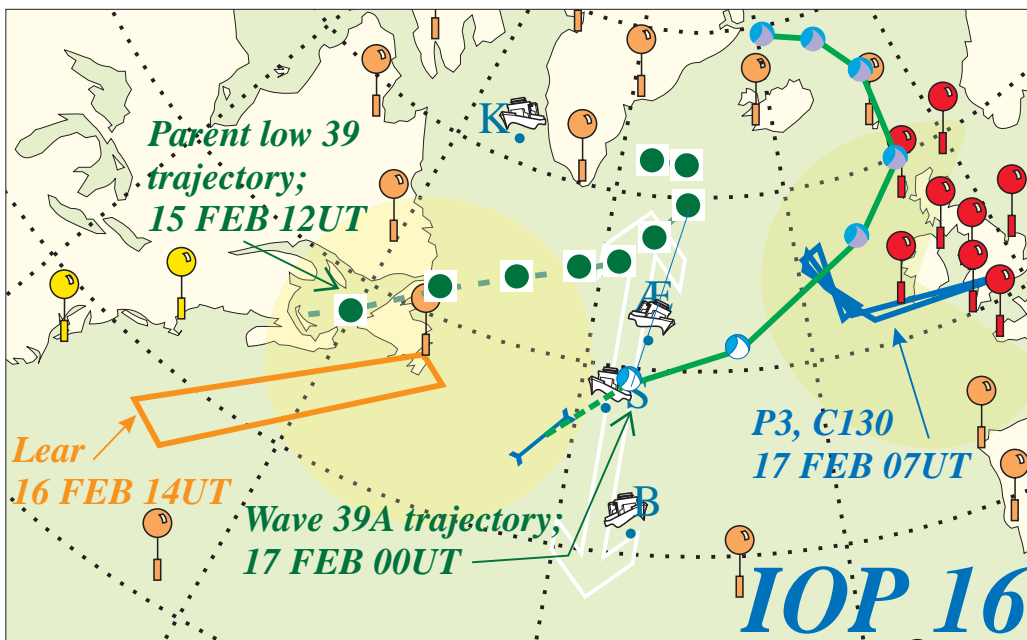
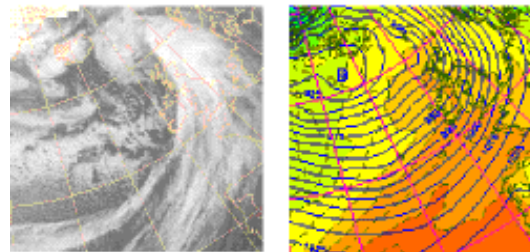
16 FEB 18UT



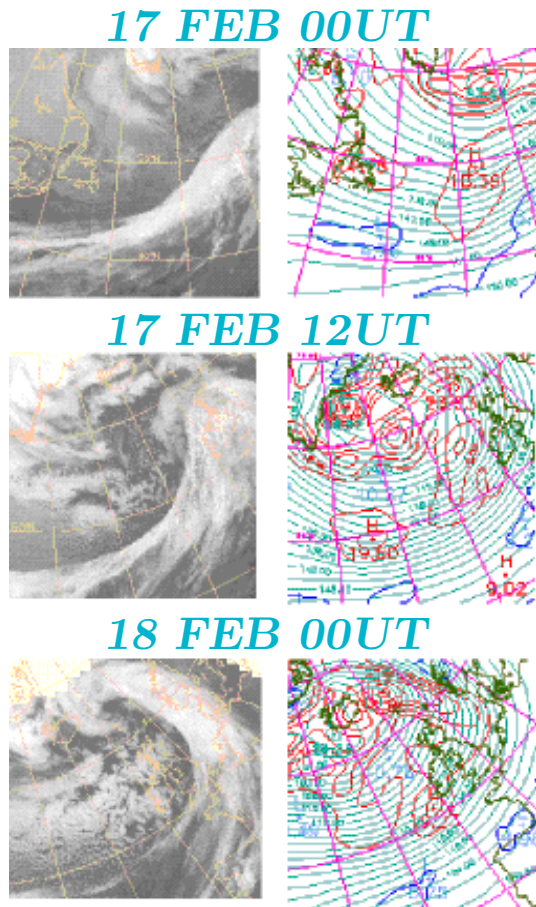
17 FEB 12UT



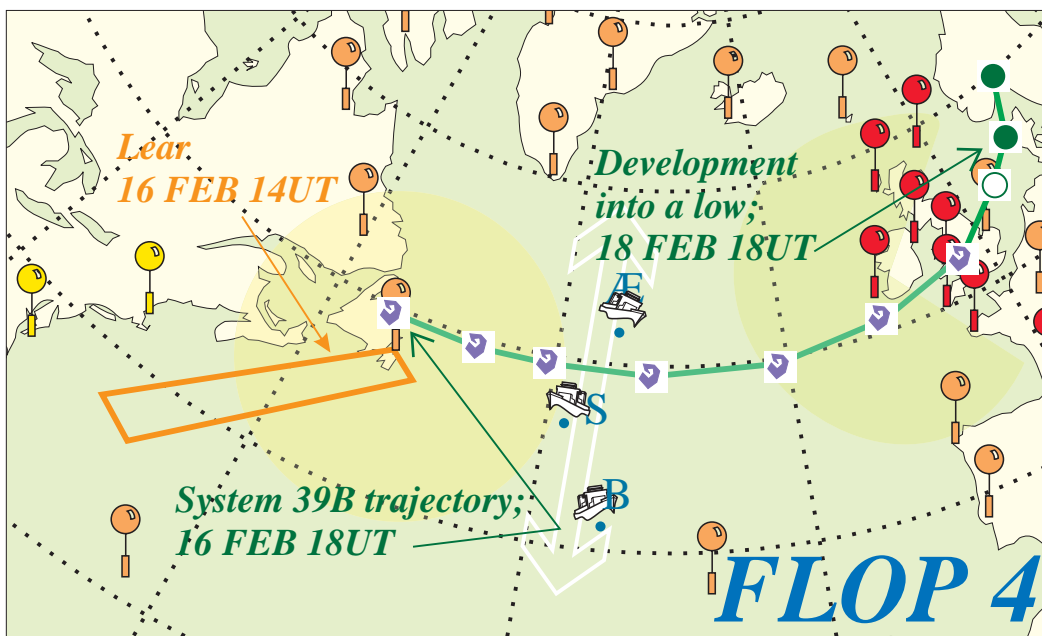
17 FEB 18UT



3.20 LOP 4, 17–19 February



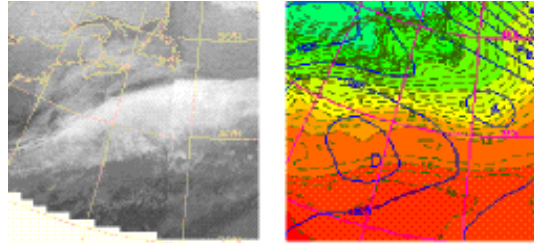
LOP 4		
	39B	low n°
17/2 06	(45W, 48N)	formation time
17/2 18	(20W, 50N) -7	max deepening rate (mbar/6h)
17/2 18	(9E, 57N) 990	max amplitude (mbar)
17/2 18	(20W, 50N)	present in MSA
19/2 00	(10E, 58N)	end of tracking time
US RS		Upstream data
LearJet		
16/2	0830	21
1345		
3 ships	5 s/d	Ships
17/2	K, Æ, B	
Eur RS	→18/2 18	Downstream data



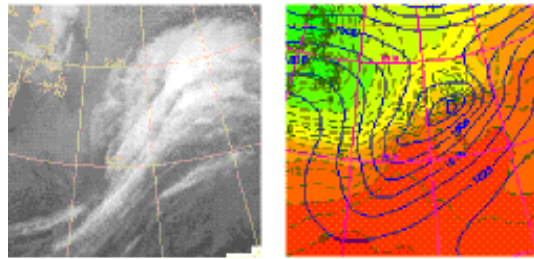
3.21 IOP 17, 17–20 February

IOP 17		
low n°	41	
formation time	17/2 12	(61W,35N)
max deepening rate (mbar/6h)	19/2 00	(22W, 51N) -16
max amplitude (mbar)	20/2 00	(7W, 62N) 943
end of tracking time	20/2 00	(7W, 62N)
US RS	→ 18/2 00	
LearJet	18/2 0015	0245 13
C130 USAF		
Gulfstream (1)	17/2 1730	0500 20
KNORR	18/2 1200	24 5 (51W,62N)
ÆGIR	19/2 0000	18 9 (35W, 52N)
SUROÏT	18/2 1800	18 12 (36W,46N)
V. BUGAEV	18/2 1800	18 15 (35W,41N)
Other ships		
Gulfstream (2)	18/2 1830	0700 52
C130	19/2 0645	1030 35
P3 NOAA	19/2 0730	0900
Electra		
Gulfstream (3)	19/2 2030	0700 27
European RS	19/2 15	24 10
Other facilities	Nors'aq 18/2 12 24 8	

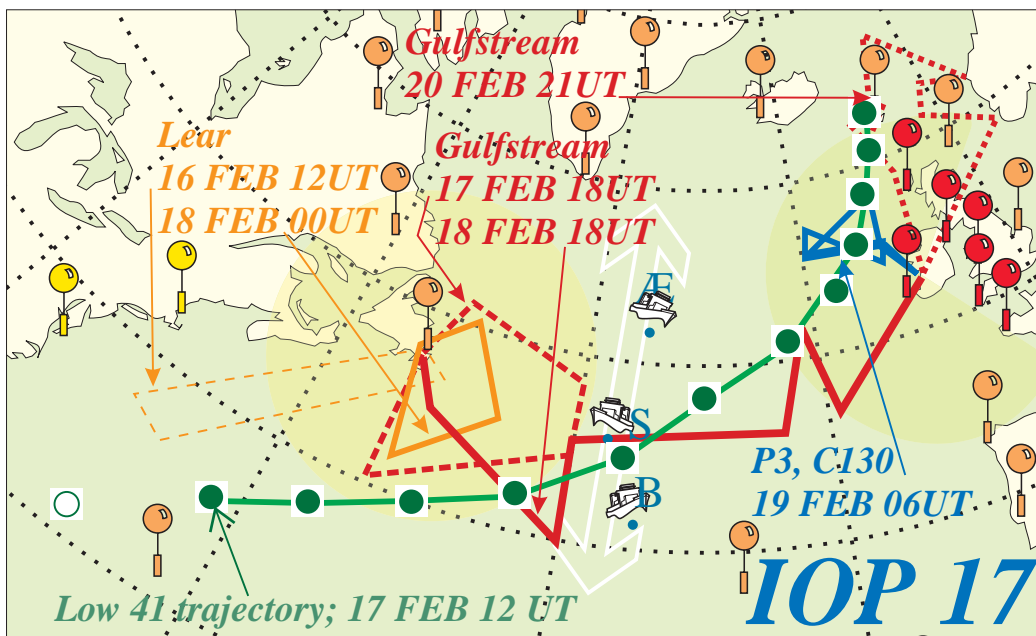
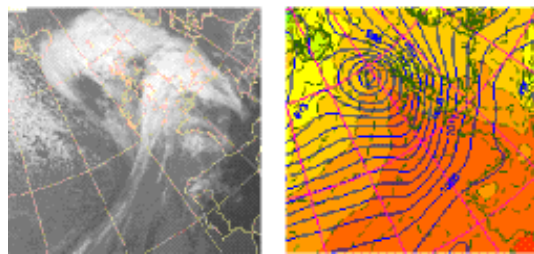
17 FEB 12UT



18 FEB 12UT

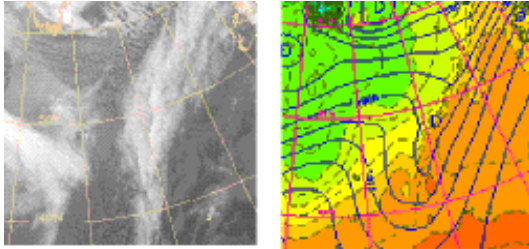


19 FEB 12UT

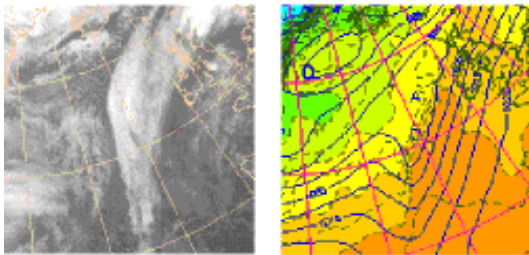


3.22 LOP 5, 22–23 February

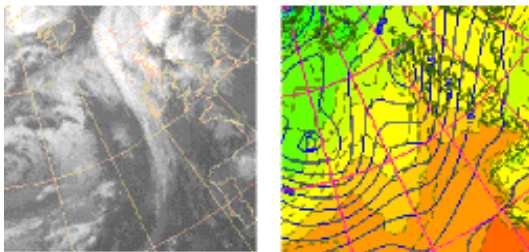
22 FEB 00UT



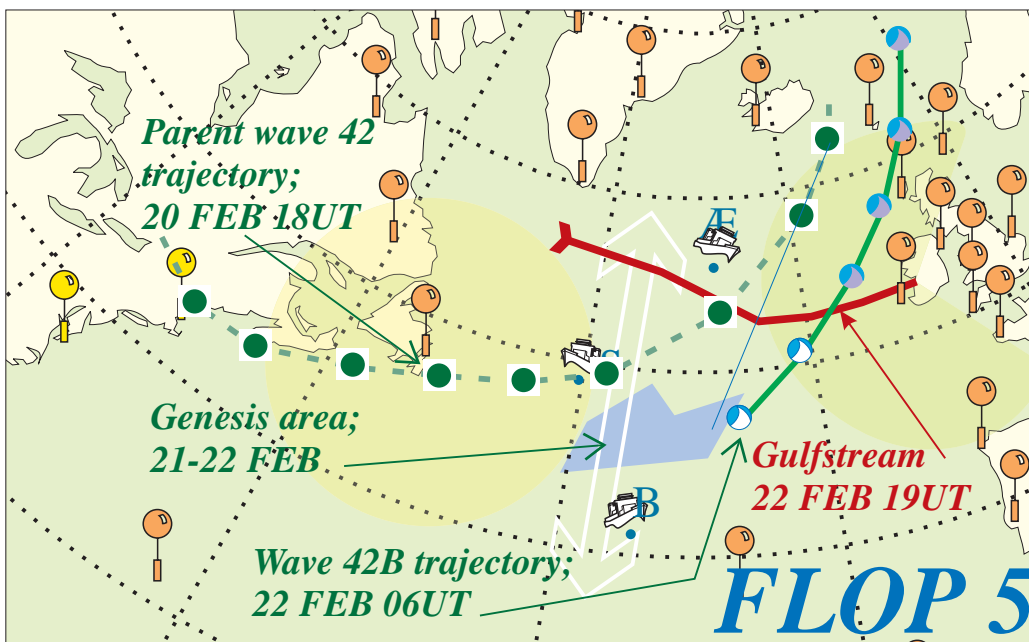
22 FEB 12UT



23 FEB 00UT



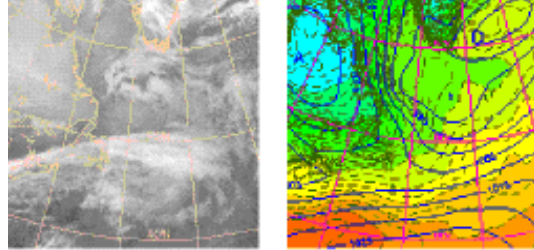
LOP 5		
	42B	low n°
22/2 06	(27W, 47N)	formation time
22/2 12	(21W, 51N) -10	max deepening rate (mbar/6h)
23/2 12	(1E, 63N) 967	max amplitude (mbar)
22/2 18	(15W, 54N)	present in MSA
23/2 12	(1E, 63N)	end of tracking time
US RS		Upstream data
3 ships 21/2	4 s/d Æ, S, B	Ships
Gulfstream 22/2 1845	0445 en route	Downstream data



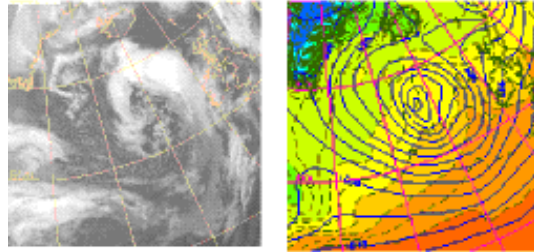
3.23 IOP 18, 22–25 February

IOP 18			
low n°	44		
formation time	22/2 12	(44W, 54N)	
max deepening rate (mbar/6h)	23/2 00	(32W, 53N) -10	
max amplitude (mbar)	24/2 18	(4W, 60N) 950	
end of tracking time	25/2 00	(4W, 60N)	
US RS	19/2 18	22/2 18	
LearJet	22/2 0000	0400	18
C130 USAF			
Gulfstream (1)	22/2 1115	0630	25 Sh → Gob
KNORR	22/2 0600	24	8 (57W, 57N)
ÆGIR	23/2 0000	24	12 (28W, 60N)
SUROÏT	23/2 0000	24	9 (42W, 48N)
V. BUGAEV	23/2 0000	24	7 (35W, 41N)
Other ships	23/2 06	1 ASAP	
Gulfstream (2)	22/2 1845	0445	33 Gob → Sh
C130			
P3 NOAA	23/2 1515	0915	22
Electra			
Gulfstream (3)			
European RS	24/2 09	30	12
Other facilities	Nors'aq 22/2 00 24 8		

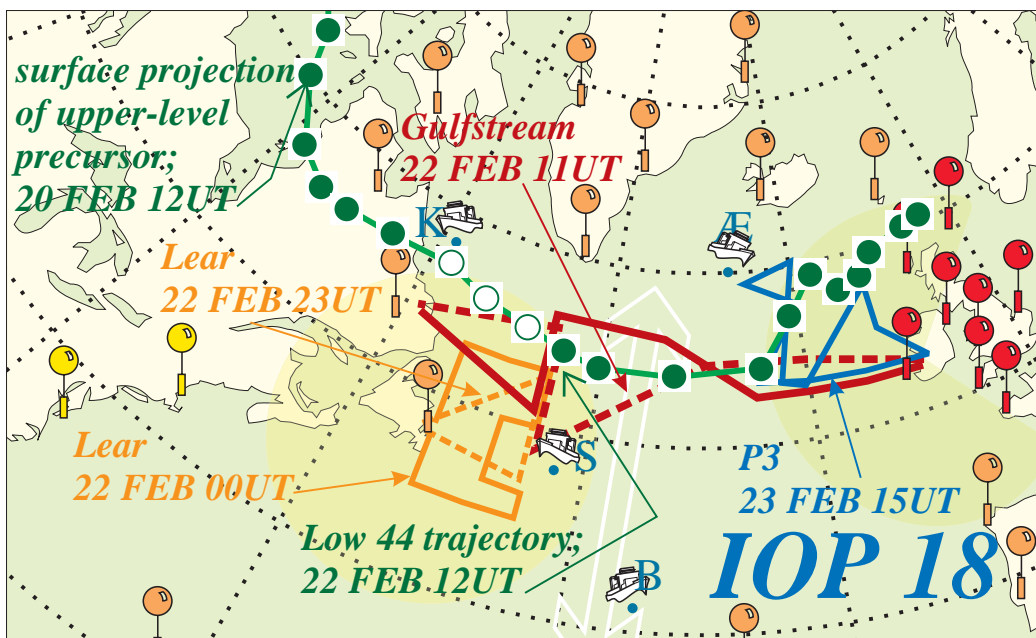
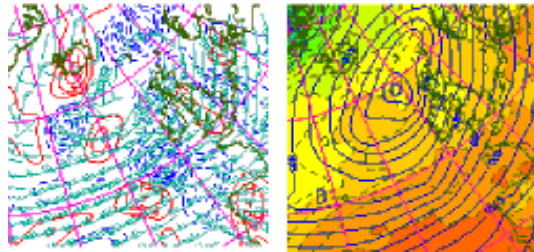
22 FEB 12UT



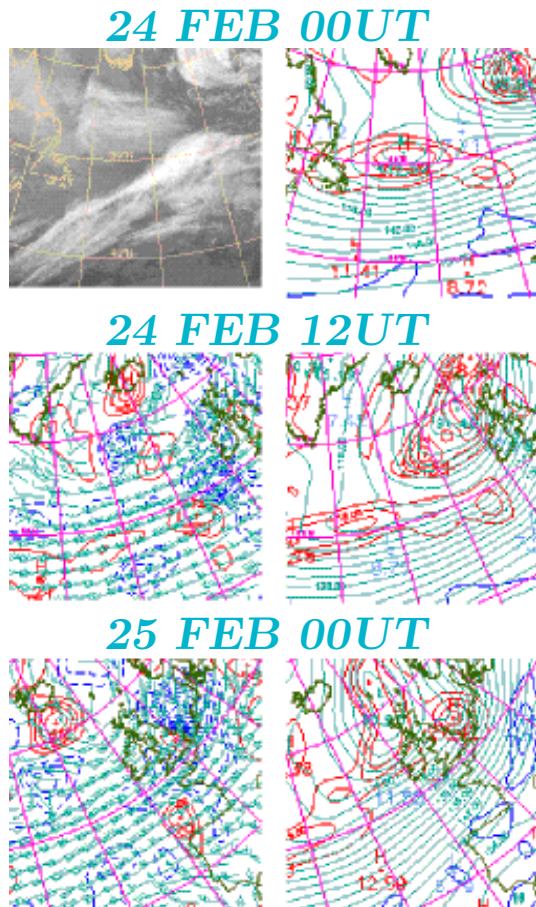
23 FEB 12UT



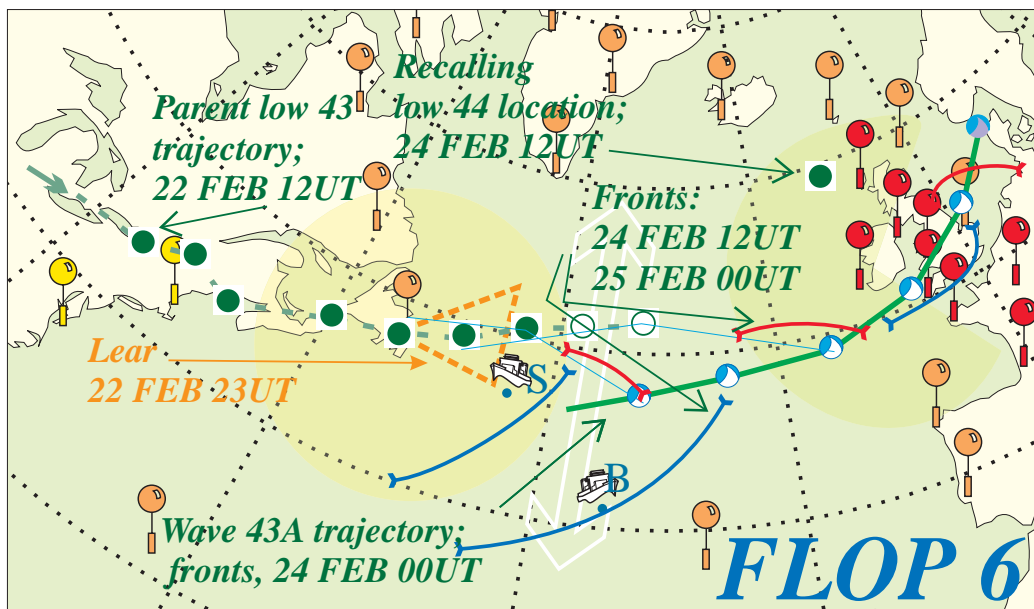
24 FEB 12UT



3.24 LOP 6, 24–25 February



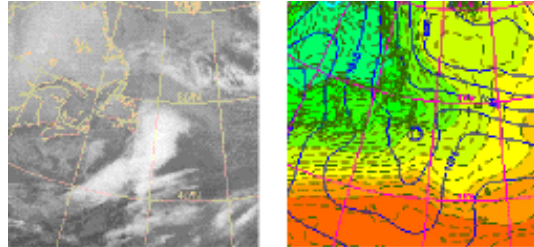
LOP 6		
	43A	low n°
24/2 00	(33W, 47N)	formation time
24/2 12	(16W, 49N) -10	max deepening rate (mbar/6h)
25/2 06	(10E, 57N) 965	max amplitude (mbar)
24/2 12	(16W, 49N)	present in MSA
25/2 06	(10E, 57N)	end of tracking time
US RS		Upstream data
LearJet		
22/2 0200	10	
2300		
Suroît	8 s/d	Ships
23/2 (43W, 47N)		
24/2		
Bugaev	4 s/d	
24/2 (35W, 41N)		
Eur RS	→25/2 18	Downstream data



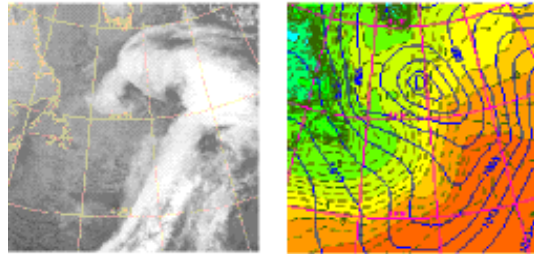
3.25 IOP 19, 26–28 February

IOP 19		
low n°	46B	
formation time	26/2 12	(38W, 41N)
max deepening rate (mbar/6h)	27/2 06	(23W, 60N) -11
max amplitude (mbar)	27/2 12	(25W, 62N) 957
end of tracking time	28/2 06	(28W, 58N)
US RS	23/2 18	27/2 00
LearJet	26/2 0000	0345 16
C130 USAF		
Gulfstream (1)		
KNORR	27/2 1200	24 7 (49W, 60N)
ÆGIR		
SUROÏT	26/2 1500	18 13 (40W, 45N)
V. BUGAEV	27/2 0000	18 10 (28W, 40N)
Other ships		
Gulfstream (2)		
C130	27/2 0730	1100 21
P3 NOAA		
Electra		
Gulfstream (3)	27/2 1345	0730 48
European RS	27/2 18	24 5
Other facilities		

25 FEB 12UT



26 FEB 12UT



27 FEB 12UT

